

CLINTON HERALD
2010



visitor and newcomer guide

CLINTON • JACKSON • WHITESIDE • CARROLL COUNTIES

At Ashford University, you'll benefit from a high-quality degree program at one of the lowest costs available in the Midwest. Ashford University provides educational opportunities to the entire Clinton Community by offering degree programs for:

- **Graduating high school seniors**
- **Community college transfers**
- **Adults seeking to further their career**

Founded in 1918, Ashford University has helped thousands of students just like you earn their college degree. You could be next.

The logo for Ashford University is centered in the upper half of the page. The word "ASHFORD" is in a purple, serif font, and "UNIVERSITY" is in a yellow, serif font. Below the name, it says "FOUNDED 1918 - CLINTON, IOWA" in a smaller purple font. The background of the entire page is a photograph of a large, multi-story brick building with a red roof and a cross on top, set against a clear blue sky. Green tree branches are visible on the left side.

ASHFORD UNIVERSITYSM

FOUNDED 1918 - CLINTON, IOWA

Learn more today!
800.242.4153
www.ashford.edu
admissions@ashford.edu

400 North Bluff Blvd.
Clinton, Iowa 52732

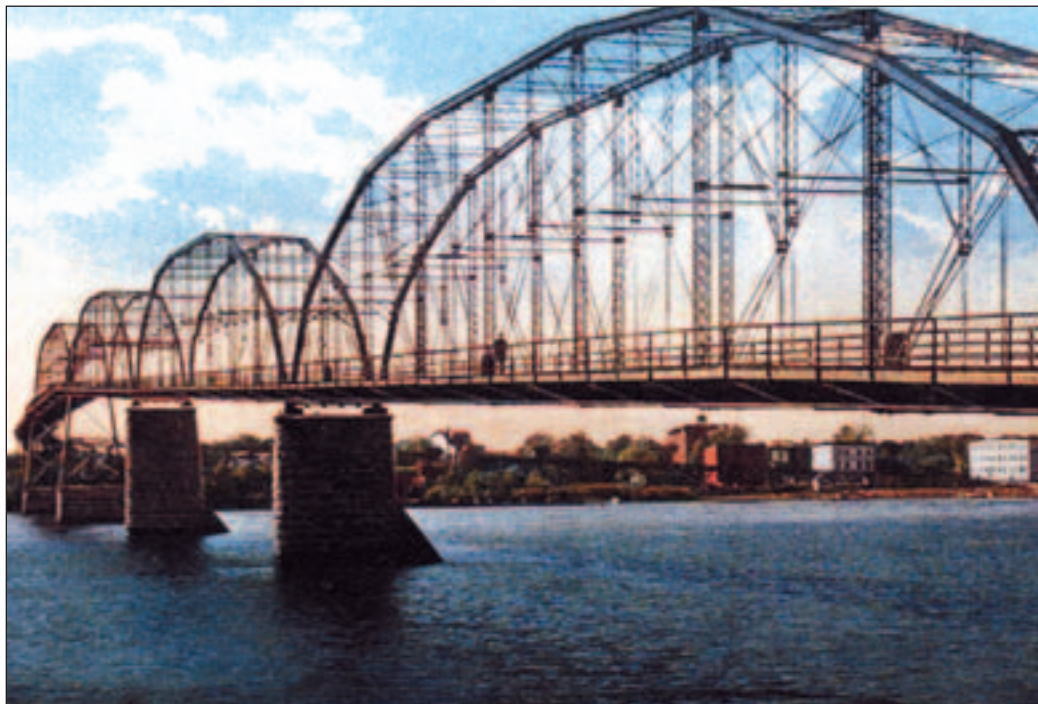
Welcome to Clinton

It was born near the Mississippi River around 1834 and christened New York.

It later adopted three other cities and included them in a single family.

That's about as brief a genealogical history of the city of Clinton as you can get.

The original tiny townsite of New York, with one store building owned by J.M. Bartlett, was renamed Clinton after it had been purchased in 1838 by Capt. C. G. Pearce of Cincinnati, Col. Beal Randall of Baltimore and a Col. Jennings.



CLINTON, continued on 4



- VIDEO & REEL SLOT MACHINES
- VEGAS STYLE TABLE GAMES
- SUITE & DELUXE ACCOMMODATIONS
- SPORTS BAR & GRILL
- SIGNATURE BUFFET
- NATIONAL ENTERTAINMENT ACTS

VisitorGuide 0310

Half Off Entree

Purchase any entree from Coaches Corner at regular price and receive a 2nd entree of equal or lesser value for 1/2 off

Offer Expires
December 30, 2010

Must be a Wild Times Club member. Membership is free. Limit one coupon per person per day. Cash offer only and cannot be combined with any other offer including transfer of complimentary points. Management reserves the right to change or discontinue any promotion at any time without prior notification.



WILD ROSE
CASINO & RESORT™

777 Wild Rose Dr., Clinton, IA 52732
800-457-9975 • 563-243-9000
Gambling Problem? Call 1-800-BETS OFF

WWW.WILDROSERESORTS.COM

CLINTON

Story continued from 3

By this same time, a neighboring community known as Lyons, located to the north, already had been established by Elijah Buell. Two other communities also sprouted up nearby — Ringwood and Chancy.

As early as 1870, Clinton sought to annex Ringwood but residents of the area objected and the plan was shelved until 1873, when a merger agreement was reached.

Chancy had grown rapidly because of the large number of workers attracted to the area by the lumber mills and railroad shops.

A movement for the annexation of Chancy had been in progress for several years when a “blue ribbon” com-



mittee composed of leaders of both communities worked out the necessary details.

A park, a church and a meal site still carry the name Chancy as does the No. 4 fire station.

Lyons continued to operate as an independent city with its own council, school and fire department until April 20, 1895, when at a special election, consolidation with Clinton was approved.

Clinton, located on the Lincoln Highway and linked to Illinois by two major bridges, is well-known for



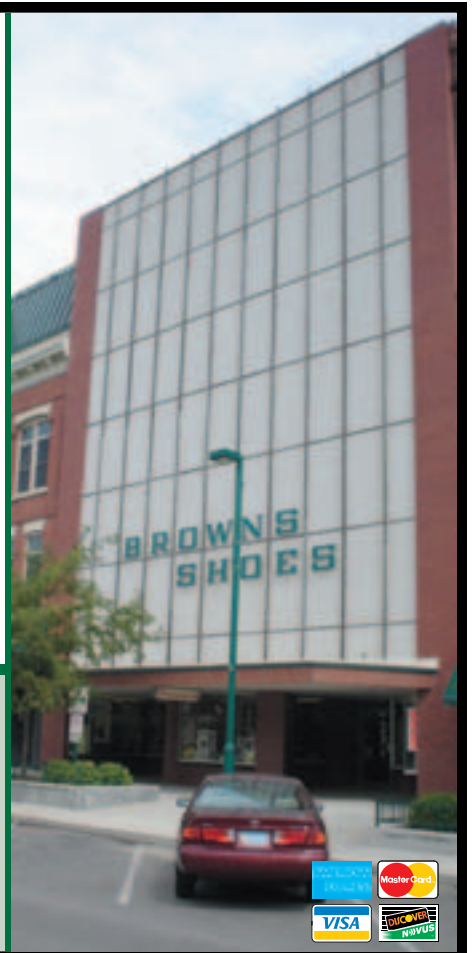
building its foundation on the lumber business.

Before the Gay Nineties had even been ushered in, Clinton had gained the reputation for having more millionaires per capita than any other city in the nation.

Its wealth was reflected by the numerous mansions concentrated on Fifth, Sixth and Seventh avenues south.

The city continues to be known today for its industrial base and its ties to the river.

We carry 1000's of name brand shoes!



Since 1959...

Brown's SHOE *Fit Co*

238 5th Ave. So. • 563-242-2336

Hours: Mon. thru Fri. 9-5:30 Sat. 9-5



everyday furniture that's not your everyday furniture



Stop In To See Our Weekly Specials



*Your Furniture
& Mattress Superstore*

335 5th Ave. S. • Clinton, IA

242-8064

**WE ACCEPT
RIVER CITY GOLD**



Clinton Area Showboat Theatre

This year marks the 75th anniversary of the Clinton Area Showboat Theatre.

The city of Clinton Showboat was built in 1935 and named "The Omar." She was created as a working boat, a two-deck tug for the Ohio River Co. Mainly made of steel, she is 207 feet long and 36 feet wide. In the water she displaced 581 gross tons.

Her oaken paddlewheel, rebuilt in 1980, is approximately 32 feet in diameter. It was powered by two Marietta compound stern wheel engines that required 25 to 75 tons of coal a day. These engines produced 1,000 horsepower.

For 25 years, the Omar

pushed barges up and down the Ohio River. Then in 1962, the Ohio River Company presented her to the State of West Virginia for use in its centennial celebration. That marked the end of her working days and the beginning of her stage career.

She was converted from a tug to a showboat without losing her charming riverboat features.

The main deck, lounge and second deck captain's quarters were preserved. The original galley area and crew's quarters became the theater.

By raising the pilothouse, a new third deck was created, providing theatre balcony and museum exhibition space. Crowning the "Rhododendron," renamed for the state flower, was the

SHOWBOAT, continued on 8



2010 SUMMER SEASON Clinton Area Showboat Theatre

563-242-6760



Lillian Russell
THEATRE



Proudly on the Showboat at 311 Riverview Drive in Clinton, Iowa
East Coast Professional Summer Repertory Theatre
P.O. Box 764 Clinton, IA 52733-0764 www.clintonshowboat.org

Become a Show Patron!

From \$10 to \$1,000 or more so that we can continue to bring you great entertainment.

The Boat Now 75 Years Old

She was built in 1935 and named "The Omar." A 2-deck tug for the Ohio River Company.

For 25 years, "The Omar" pushed barges up and down the Ohio River. Then in 1962, the Ohio River Company presented her to the State of West Virginia for use in its centennial celebration. That marked the end of her working days and the beginning of her "stage" career.

She was converted from a tug to a showboat without losing her charming riverboat features.

The "Rhododendron," renamed for the state flower, came to the City of Clinton, Iowa, and was moored at Riverfront Park, entertaining the public with plays in the summertime and providing an appropriate focal point for the handsome park.

When the attractive, protective dike was completed in 1980, she made her second Clinton debut and was rechristened "City of Clinton"

With the rededication of the Showboat in 1980, the theatre was given the name of Clinton born Lillian Russell, one of America's most popular stars of the 1890's.

Adults \$20

Seniors \$18

Students and Kids \$16



CHOOSE HEALTHCARE THAT'S AHEAD OF THE CURVE.

When it comes to your health, choose a healthcare system whose dynamic partnerships within the medical community keep it at the forefront of expertise. A center of excellence that delivers the highest percentage of board-certified physicians in the region, \$63 million in the latest technologies and enhancements and a comprehensive range of services, including:

- Behavioral Health Services
- Cardiac Services
- Cardiopulmonary Services
- Critical Care Unit
- Diabetes Education Center
- Dialysis Center
- Emergency Services
- Home Care
- Home Medical Equipment
- Hospice
- Imaging Center
- Inpatient Rehabilitation Services
- Laboratory Services
- Memory Loss Program
- Mercy Living Centers
- Mercy Specialty Clinic (Ear, Nose & Throat/Gastroenterology)
- Nutrition Services
- Obstetrics/Birthing Services
- Pediatrics
- Progressive Care Unit
- Radiation Oncology Center (University of Iowa Health Care Affiliate)
- Rehabilitation Services
- Sleep Disorder Center
- Surgical/Medical Services
- Transitional Care Program

563.244.5555

CHOOSE CONFIDENTLY.
MERCYCLINTON.COM





SHOWBOAT

Story continued from 6

pilothouse with its captain's control wheel and a bird's-eye view of the river.

The city of Clinton purchased the Rhododendron from the State of West Virginia in 1966 at a public bid price of \$21,165. She is

now home to the Clinton Area Showboat Theatre.

The 2010 season has several well-known productions, including a couple that share a "river" theme.

The 2010 season opens June 3 with "Rent." This popular and modern musical is about the life of young artists living in New York, based on the opera La Boheme. This show boasts

hit songs such as "Seasons of Love," "Glory" and "La Vie Boheme." The show will close on June 13.


From June 17 to June 27, "Noises Off" will be performed. This comic farce, about a theater company putting on a play doomed for failure, is full of backstage antics. This translates to chaos on-stage when the scenery flips completely

around to see backstage.


"Showboat," the classic story of life on the Mississippi sailing on a Showboat, will be performed from July 15 to July 25. This show will feature such songs such as "Old Man River" and "Can't Help Lovin' dat Man."

People are welcome to journey with Tom, Huck, Pap and Judge Thatcher in the classic Mark Twain tale, "Big River," performed from July 29 to Aug. 8. Music includes "Muddy Water" and "River in the Rain."

The last main stage production will be "Sunday in the Park with George," from Aug. 12 to Aug. 22. Stephen Sondheim pens this beautiful homage to pointillist painter George Seurat. This show will have people humming its music for months to come.




We work...




Ericksen Center

...so you can play!

- The Department offices are located at the **Ericksen Community Center**, and are open Mon – Fri, 8 am – 7 pm, Sept – June (8 am – 4:30 pm July & Aug). In and around the Center & Emma Young Park, the Department offers a wide variety of programs in: adult sports, youth sports, special interests, special events, various clubs and fitness activities. The facility is available for party rentals. .
- Riverview Pool** is located in Riverview Park by Clinton Riverfront. Hours are Monday-Friday 1pm-7:30pm, Sat./Sun. 1pm-6pm. An approximate season is June 1-Aug. 25. The pool is available (at specific times & days) for rental.
- Picturesque **Eagle Point Lodge** overlooks the Mississippi River and is nestled atop Eagle Point Park. Available for rent year round for any occasion.



Eagle Point Lodge



RECREATION
DEPARTMENT

1401-11th Avenue North • Clinton, Iowa
(563) 243-1260

Clinton marina

Clinton’s marina witnessed redevelopment and construction of the marina amenities building, to offer the area a brand-new marina fit for river kings.

The marina project was part of Vision Iowa and Clinton’s “Things to Do With A River View” project.

On May 13, 2008, the city of Clinton approved a five-year marina operator contract between the city and Skipper Marine Development. The contract states SMD acts as the operator and as such is responsible for all manner of operations, including the condition of the marina, such as system maintenance and cleaning.

The Clinton Marina maintains 30 available slips for transient boaters at all times. In total, the marina has 130



slips, boat ramps and offers a place to store people’s boats over the winter. Boaters can also fill up their gas tank, do their laundry, connect their boat to an electrical outlet or take a shower at the marina.

The amenities building covers 9,770 square feet and has a lower patio deck that is 7,500 square feet.

In October 2009, Clinton officials named Candlelight Inn, which has two locations in Sterling, Ill., and Rock

Falls Ill., as the new restaurant to take over the top floor of the amenities building. The restaurant is well-known for Chicken George or Catfish Charlie dishes. The opening is expected May 15, 2010.

Bridging the Gap... **the ALVERNO** *...from Hospital to Home*
 Celebrating 95 years of Quality Healthcare

849 13th Avenue N. • Clinton, IA 52732
 563.242.1521
 www.TheAlverno.com

Following a hospital stay, you have a choice in where to receive inpatient therapy and skilled nursing services. Request The Alverno for your skilled care stay and let us help you get **“from our home, back to yours!”**



Clinton LumberKings Baseball

Alliant Energy Field is home to the Clinton LumberKings, a professional Class A baseball club of the Seattle Mariners.

Enjoy family fun and entertainment during the spring, summer and fall.

Home games are from April through September.

Contact (563) 242-0727 or at www.lumberkings.com.



CLINTON LUMBER KINGS BASEBALL CLUB
ALLIANT ENERGY FIELD
P.O. BOX 1295
CLINTON, IOWA 52733
(563) 242-0727 / FAX (563) 242-1433
www.lumberkings.com

Celebrate Fulton, Illinois....

1835-2010 • 175 Years

- Authentic Dutch Windmill
- Windmill Cultural Center
- Heritage Canyon - 1800s Village
- Lock & Dam 13
- Historic Downtown Shopping District
- Fulton (Martin House) Museum
- Quality Dining & Lodging
- Great River Trail
- Ronald Reagan Trail Community
- National Scenic Byways: Lincoln Highway & Great River Rd.



Events

- Dutch Days Festival April 30 - May 2, 2010
- Summer Community Nights - June 10, July 8, July 22, and August 12
- Bridal & Anniversary Walk June 24, 2010
- Lincoln Buy-Way Sales August 6 & 7, 2010
- Fall Festival October 2 & 3, 2010
- Christmas Walk December 3 & 4, 2010
- Bald Eagle Watch January 8, 2010

For more information, visit www.cityoffulton.us or call 815-589-4545.

Bickelhaupt Arboretum

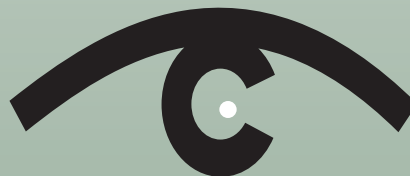
In this the 40th anniversary year of the Bickelhaupt Arboretum, the public garden showcases plants which have come of age.

Begun 40 years ago in response to the devastation in Clinton by the Dutch Elm Disease, the vision of Frances and Bob Bickelhaupt: a public garden created to serve as a connection between plants and people — has led to a nationally acclaimed arboretum visited by more than 31,000 people annually.

The 14-acre outdoor museum of select-labeled trees, shrubs, ground covers, perennials and annuals, features one of the top garden



ARBORETUM, continued on 13



Midwest Vision Clinic PLC

Midwest Vision Clinic, PLC offers the Gateway area residents complete eye care services. We offer comprehensive eye health examinations, a wide selection of eyewear styles and specialized contact lens fittings.

We look forward to providing your family with all your eye care needs.

24 HOUR EMERGENCY CARE



Rebecca Peck, OD



Brian Peck, OD



Tara Keesey, OD

425 So. 2nd St., Clinton, IA • 563-242-0223

Hours: Monday 8 to 6; Tuesday-Thursday 8 to 5; Friday 7 to 3

ARBORETUM

Story continued from 12

conifer collections in the country, numbering more than 600 cultivars. Collections include: native prairie grasses and flowers, ornamental shrubs, Strout Medal Daylily collection, shrub roses, flowering trees, a Monarch Watch Butterfly Station, reflective Herb Garden, Rock Garden and American Hosta Society National Display Garden. A new feature on the grounds is the Bird Haven, begun as an Eagle Scout project and now used by local birding groups. A museum display of native animals and birds, lending library, and meeting sites are in the Visitor's Center, where Saturday at the Arb classes are held October to April. These



classes include Geocaching, Constructing a Leopold Bench, Orchids, Wreath-making and Kitchen Gardens.

Open to the public, daily from dawn to dusk, free of charge, the arboretum hosts free guided tours Saturday and Sunday at 2 p.m. May through October and other tours by appointment.

A display of the Approved Street Trees for Clinton, emphasis on natural solu-

tions to pest problems and maintenance for homeowners and site of the Plant Partner program all are available to the community.

ButterflyFest will be held on Aug. 28 10 a.m. to 1 p.m. Visitors will learn about the Monarch Butterfly through the tag and release program.

Equinox and Solstice celebrations are held to announce the change in the seasons. The arboretum hosts elementary school

classes in the No Child Left Inside Program, as well collaborates with the EnvironKids program and ISU Clinton County Master Gardeners.

A cadre of volunteers maintain the specialty gardens, teach the classes and campers, guide tours and are the most important resource of the Bickelhaupt Arboretum.

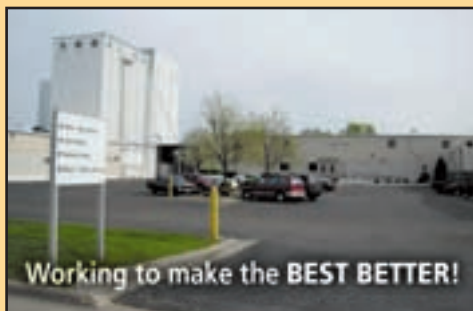
Outdoor concerts are held in summer months:

- **June 15, 7 p.m.** — String Quartet
- **July 6, 7 p.m.** — The Drs. Engelson
- **Aug. 3, 7 p.m.** — Travis Hosette
- **Sept. 7, 6:30 p.m.** — Al Ronek "The Pirate Over 50"
- **Sept. 19, 2 p.m.** — Clintones Community Woman's chorus

Visit the Web site at www.bickarb.org.

Thomas & Betts

Thomas & Betts (NYSE-LMS) is a leading producer of thermoplastic electrical fittings, fiber optic cable conduit and thermoplastic sewer pipe. The major products of the Clinton plant are Plastic Conduit and blue ZIP® boxes – plastic mounting boxes for outlets and switches. The millions of little blue boxes produced at the Clinton facility are found in almost every hardware store in the United States.



The Clinton plant employs approximately 195 associates and provides substantial work to sheltered workshops including Rolling Hills, ADAC, and Skyline Center, Inc. Thomas and Betts, formerly Carlon, is a high-performance company whose associates work to improve our operations through the Total Quality Pursuit program. Teams have been able to reduce scrap, improve equipment design and increase shipping accuracy. Our goal is to continually improve all processes, whether people

or equipment oriented. Because of the TQP process the Clinton Plant was able to add 45 new manufacturing jobs. In 2004, Thomas and Betts moved its electric non-metallic tubing (plastic conduit) manufacturing from Pasadena, Texas to Clinton, Iowa. Working together toward recognized goals keeps us strong and has fueled our expansion.

Eagle Point Park

Situated in the northern section of Clinton is one of the best assets of the city, beautiful Eagle Point Park — well-maintained, unusual and very delightful.

Even if you don't have the time to stop, a drive through the park will prove to be thoroughly enjoyable and scenic. Eagle Point Park has come a long way since its early beginnings.

When the Depression struck Clinton in 1933-34, the Clinton Board of Park Commissioners immediately took advantage of Works Progress Administration funds. The WPA Program was the biggest relief program in U.S. history, used for direct relief of the unemployed. The federal government gave money to states in order to put people to work during the Depression.



The city of Clinton received \$3 million of these funds to beautify Eagle Point Park and Riverview Park. The Stone Lookout Tower, located in Eagle Point Park, was designed

and built in 1937 by the WPA. From the top of this tower, you can witness a panoramic view of the Mississippi River.

There is a limestone footbridge spanning a small

ravine that was also constructed by the WPA, and the existing pavilion was completely rebuilt around 1935 by the WPA.

Today there are many other attractive features of the park. Playgrounds with recreational equipment are located in the south end and the north end of the park. Near these playgrounds are open-air pavilions, picnic tables and grills for public use. A rock garden with a waterfall has flowers planted near it that spell out Eagle Point Park. There is also a baseball diamond and sporting equipment for rent. The lodge is a spacious stone structure with many windows and a fireplace inside.

It is open to the public and may be rented for parties, etc. In the winter, the snow-covered park can be used for sledding and cross country skiing.

HyVee®

HealthMarket®

Your Hy-Vee HealthMarket offers a variety of organic, natural and gluten-free foods as well as green cleaning products and all-natural beauty products. Stock up and save 10% on your HealthMarket purchase the first Friday of every month.

Meet your Clinton Hy-Vee Registered Dietitian

Services include:

- Cholesterol & blood pressure screenings
- Personalized shopping assistance
- Gluten-free support group
- Community nutrition programs at your business site/organization
- Individualized nutrition counseling
- Monthly nutrition newsletter



Beth Freehill, RD, LD
901 S. 4th St., Clinton, IA
563-243-6162
bfreehill@hy-vee.com

COUNTER TOP

Granite
Solid Surface
Quartz
Laminate

CERAMIC TILE

Large Variety



PLUMBING FIXTURES

Delta
Kohler



Location: 1845 Manufacturing Drive, Suite C • Clinton, Iowa • 563.241.1918 • **Hours:** M-F 8am-5pm / Sat. 8am-12pm



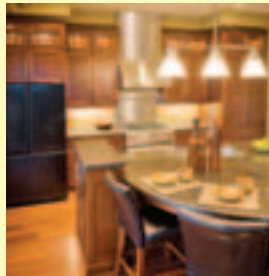
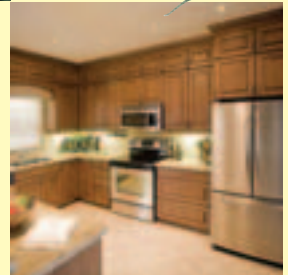
KITCHEN & BATH
Inspirations

Your kitchen and bath are two of the most frequently used rooms in your house. Now they can also be your favorite rooms!

Visit our modern showroom today and see the countless styles and colors available!



Leanna & Amber



563.241.1918



Riverview Park

At 65 acres, Riverview Park checks in as the third-largest of Clinton’s 18 park facilities.

However, as home to the pool, recreational vehicle park, bandshell, fountains and skate park, its proximity to the Mississippi River and the Clinton Area Showboat Theatre and its function as the site for Riverboat Days, Riverview Park rivals Eagle Point Park as Clinton’s signature recreational area.

Riverview Park essentially reaches into downtown via the memorial fountain at the intersection of Sixth Avenue South and Riverview Drive, which also ties into the Jack Dermody Memorial Garden.

The park continues up to Ninth Avenue North at the site of one of Clinton’s four public access boat ramps. In the middle are tennis courts,



ball diamonds, concession stands, picnic tables and grills, playground equipment and restrooms, along with the big amenities listed earlier.

Spanning the length of the park is Riverview Drive, it also features a portion of the city’s recreational trail. The first phase of the Discovery Trail, built in the summer of

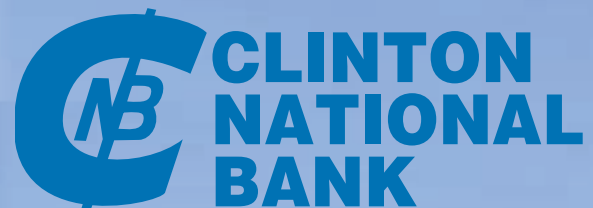
1986, extends 1.6 between Ninth and 26th avenues north. In the fall of 1991 it was extended from 26th Avenue North to Eagle Point Park, an addition of 2.2 miles. Then, in 1997, the trail was extended the entire length of Riverview Park and beyond, carrying south to the U.S. 30 bridge.

The recreational vehicle

park is situated at Ninth Avenue North and Riverview Drive. It features electrical hookups, picnic tables, water, a dump station and fill water as well as restroom and shower facilities. The park is open for camping year-round, though water is not available from November to March.

Clinton National Bank

- The Area Leader in Home Loans, Business Loans & Trust Services
 - Free Online Services: PC Banking, eStatements & Bill Payment
 - Nine Convenient Full-Service Banking Locations
 - Serving People & Businesses Since 1865
 - Largest Independent Bank in the Area
 - Local Decision Making



Member F.D.I.C.

Safe, Sound & Secure
1-800-243-9007



www.clintonnational.com

Andover 682-7121 Camanche 259-8371 Clinton 243-1243 Delmar 674-4338 Lyons 244-4116 Lincolnway 244-4105 Miles 682-7777 Preston 689-5291 Sabula 687-2551



... count on us for quality building supplies. Good results begin with a solid foundation, and that requires the right materials for the job. That's why professionals and do-it-yourselfers alike trust us for a comprehensive selection of tools, hardware, lumber and supplies. Plus, our selection, service and knowledgeable staff are the best in the business!

A Reputation Built on Quality... for Over 61 Years



Building Supplies

Paint & Decorating

Windows & Doors

Plumbing Supplies

Electrical Supplies & Fixtures

Builder's Hardware

Hand & Power Tools

Kitchen & Bath

Lumber & Decking

Lawn & Garden Supplies

Architectural Planning

BRINKMAN BUILDING CENTER

915 2nd St., Fulton, IL

1-815-589-3100 or 1-800-232-3353

Open Mon.-Fri. 7:30-5:00; Sat. 8:00-4:00; Closed Sunday

www.brinkmanbuildingcenter.com

Wild Rose Casino & Resort

The Wild Rose Casino and Resort opened its doors in Clinton in June 2008 after 13 months of construction, 1 million cubic yards of fill and countless hours of planning and preparation.

The Wild Rose, Iowa's first true land-based casino took the place of the Mississippi Belle II riverboat casino and has quickly become one of the most popular destinations around.

The 120,000-square-foot facility sits on an expansive 28 acres, and features two dining facilities, a grand ballroom and a gift shop specializing in local fare in addition to the 28,000-square-foot casino and 60-room hotel. Located on the corner of U.S. 30 and Mill



Creek Parkway at 777 Wild Rose Drive, the casino and resort offer guests full-service valet parking or self-park in one of the 1,000 parking spots available at the facility.

CASINO, continued on 20



WELCOME TO PIZZA RANCH TERRITORY!

- Pickup Window
- Fundraiser
- Party Room
- We Deliver 11am-9pm



Have one of everything with Pizza Ranch® Mile-Long Buffet™! Enjoy our hot, fresh pizza, savory chicken and fixin's and more! It'll make your tummy say, "Yee Haw!"

- Buffet Lunch 11AM-1:30PM
- Tuesday Night Kids EAT FREE (1 child per adult (ages 8 & under))
- Buffet Evening 5PM-8PM
- Small Pizza \$5.00 each (No Limit. Choose toppings. Pickup or Deliver.)
- Ice Cream available

1347 11th St. NW, Clinton
242-3598
 For money saving coupons visit www.pizzaranch.com





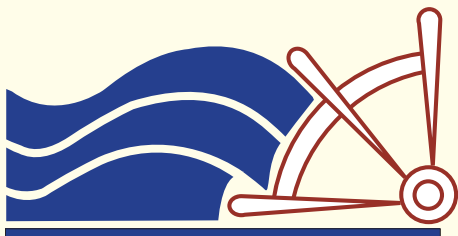
CLINTON AREA CHAMBER OF COMMERCE

Preparing Our Community

For Growth & Development



YOUR Chamber is Working for YOU!



**CLINTON AREA
CHAMBER OF COMMERCE**

CLINTON CAMANCHE FULTON

Clinton Area Chamber of Commerce
721 South 2nd Street • Clinton, IA 52732

563-242-5702

www.clintonia.com • chamber@clintonia.com

think positive. Be Positive.

CASINO

Story continued from 18

Once inside, the Grand Promenade creates a magnificent entryway, complete with dramatic oversize lighting, and large black and white artwork depicting Clinton's past, including images of the Mississippi River, Eagle Point Park and the downtown district.

The casino game floor features a 36-foot circular Roundhouse bar, complete with a fireplace suspended from the center of the ceiling. Nearly 600 slot machines and 14 table games are available to guests. The casino also features three cash kiosks, allowing guests to redeem their tickets without visiting the cash cage, and withdraw their money in multiple



denominations.

Visitors to the resort have two dining options. Coaches Corner Sports Bar & Grill features 41 televisions displaying virtually every local sporting event, including a private 19-inch TV at each booth. This restaurant serves

everything from burgers and beer to filet mignon and a reserve wine list, and is open everyday from 11 a.m. to 1 a.m.

The Sawmill Buffet includes action stations featuring signature dishes, and is open for breakfast, lunch

and dinner. Diners can pick from a large selection of entrees, appetizers and desserts, and new items offered daily. The expansive room seats up to 260 people.

The Wild Rose Casino & Resort also includes a ballroom and casino gift store. The 10,000-square-foot Oakwood Grand Ballroom features space for up to 750 people and can accommodate concerts, weddings and conventions.

Guests can purchase a variety of local items, logo apparel and unique treasures crafted by area artisans, such as handmade jewelry and soy candles, in the Iowa Store.

The casino is open from 8 a.m. to 2 a.m. Sunday through Thursday, and from 8 a.m. to 4 a.m. Friday and Saturday.

Contact: 243-9000 or www.wildroseresorts.com

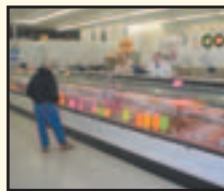
What's for Dinner?

Fareway can help with the Answer...

Every item of merchandise including fresh fruits and vegetables, meats and grocery products, purchased from your FAREWAY Store must be entirely and completely satisfactory or your money will be cheerfully refunded.

FAREWAY MEATS

WE ARE NOTED FOR OUR MEATS



If you have ever shopped at a FAREWAY Store, you know without saying that our meats are always of the highest quality.

We offer Government graded U.S.D.A. CHOICE Beef as a standard in our Meat Department. We also offer a wide selection of CHAIRMAN'S RESERVE pork, poultry and seafood products.



—FAREWAY— ECONOMICAL FOOD STORES

1350 11th St. N.W. Clinton

Grocery Phone 563-242-1960 • Meat Phone 563-242-1961

©2010 Hours: Monday - Saturday 8:00 a.m. - 9:00 p.m. • CLOSED SUNDAYS



Our Policy

To offer for sale a wide variety of nationally advertised and popular local brands of known high quality merchandise at consistently low prices every day. You will be able to make your cash savings by shopping any time most convenient to you.



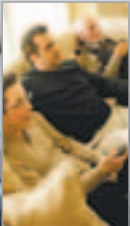
Main Avenue Craft Show/ Main Avenue Run

This event takes place the weekend after Mother's Day.

This annual craft show is located in Lyons Four Square Park (corners of Main Avenue and Roosevelt

Street) in Clinton. No charge for admission.

The annual Main Avenue Run also takes place in conjunction with the craft fair. Grab your friends and join in for this annual 4-mile run and 2-mile health walk on Saturday, May 15, at 8 a.m. Registration forms are available at either Clinton YMCA/YWCA locations.



**We Service
What We Sell**
Plus All Other Models



Van's TV
SALES • SERVICE

1212 3rd Street • Fulton, IL
1-800-680-6024 or 1-815-589-3010

Open Monday thru Friday 9am-5pm
Saturday 9am-Noon



**KEN KROEMER
INSURANCE**

- Life
- Home
- Health
- Business
- Auto



Mike Kroemer

Mike Kroemer, Agent

239 5th Avenue South
Clinton, Iowa 52732

Office (563) 242-0200

Fax (563) 242-2464

Toll Free 888-989-3347

Email: mikroemer@qwestoffice.net

Riverboat Days

The 49th Riverboat Days festival will actually be split into two festivals — one in Miles and the other in Clinton — as a way of raising funds on the front end and cutting the July festival’s expenses.

The Clinton Riverboat Days Board will host the new Miles Dirt Days on May 21, 22 and 23, in Miles as a way of raising funds for RBD. All of the RBD dirt events, including tractor pulls, mini tractor pulls and mud bogs, will take place at the Miles location. The Miles location — which is where the Miles Thresher Days take place — was chosen for the dirt events because the venue is already set up for such activities, which will save RBD



DAYS, continued on 24

BRIDGEVIEW

COMMUNITY MENTAL HEALTH CENTER

Inspiring, Encouraging & Educating

- Counseling for individuals, couples or families
- Medication management/assistance
- Child and adolescent therapy
- Community support for individuals with serious persistent mental illness
- Various therapy and support groups
- Consultation and education to community agencies, businesses and schools
- Psychiatric and psychological evaluations
- Co-occurring disorder treatment group
- Sexual abuse treatment



638 South Bluff, Clinton, IA 52732 – Phone: (563) 243-5633

Hours: Monday - Thursday 8:00 to 7:00, Friday 8:00 to 3:00

Satellite Offices Located in DeWitt and Area School Districts.

Sliding Fee Scale • Title 19 • Medicare • Private Insurance



**Our money is looking
for good homes.**

Buying - Refinancing...

See us first.



122 Main Avenue, Clinton
563-242-9111

247 7th Avenue South, Clinton
563-242-9111



www.sterlingfederal.com



DAYS

Story continued from 22

organizers from having to pay for set-up costs and moving dirt around at the July festival. This event will also have a carnival. Ticket price will be \$5.

Riverboat Days will be held on July 2, 3 and 4, in Clinton's Riverview Park. This event will feature music performances and family activities, including a carnival. Other features for the July event include using local vendors and allowing nonprofit organizations the chance to do fundraising on the grounds during the festival.

Presale tickets for July

events will be sold at \$12, which will cover all three days of the festival. Those buying day passes will spend \$7 on July 2; \$7 on July 3; and \$5 on July 4. Those ticket prices will cover activities on all of the grounds, not just select areas. They also will cover entertainment, which will be the Kiss Army on July 2 and Confederate Railroad, which will be brought here through sponsorship of the Wild Rose Casino, on July 3. The group also is playing at Wild Rose the next evening. Local entertainment will be performed on the final night of the festival.

For more information about Riverboat Days and its scheduled performances, go to Riverboatdays.org.



Ashford University

In 1918, Mount St. Clare College was founded as a junior college by the Sisters of St. Francis, Clinton, Iowa. The last 90 years have brought significant changes, but what has never changed is Ashford University's commitment to provide affordable, innovative, and high-quality learning opportunities to adult learners. A person will find that Ashford University is a blend of tradition with 21st-century vision.

Originally an outgrowth of Mount St. Clare Academy (which was founded in 1893), the College was designed to meet a higher education need in Clinton and the surrounding area. MSC held its first formal



ASHFORD, continued on 29

Snell-Zornig

Funeral Homes and Crematory



Dennis Zornig



Dennis A. Lemke



Ryan Veenstra

CLINTON • CAMANCHE

(563) 242-0252

Hearts and Hands

The Hearts and Hands group is looking for volunteers for projects that will help area residents in need of home improvement.

The all-volunteer Hearts and Hands group is made up of members of the First United Methodist Church and community volunteers of all ages. The group helps local families that are physically or financially unable to do improvement projects themselves. The projects range from repairing and painting interior walls or ceilings, exterior painting, replacing broken windows, removing debris, cleaning basements, yard work and possibly building handicap ramps. The purpose of the projects is to make homes more comfortable, safe and

secure. Most projects entail work just about anyone of any age can do and no specific training is necessary to help those in need in the community.

Dennis Glew, assistant pastor at FUMC and a coordinator of the Hearts and Hands group, said there always are projects that need to be done. The church first started running Hearts and Hands in 2003 in collaboration with RSVP. Glew said Tammy Meyer and Harold Welcher of RSVP were driving forces in Hearts and Hands. Meyer still takes applications for the program.

The group also receives assistance from members of the Clinton Rotary Club, Salvation Army and the community groups and organizations.

The Heart and Hands program always welcomes new

volunteers. Any area contractors who would be willing to donate their time, equipment or materials would be especially helpful. Work days are scheduled on Saturdays in the spring, summer and fall, depending on what is needed and availability of volunteers. There is a need for both skilled and unskilled volunteers of all ages. Area residents can volunteer on their

own or as part of a team with friends.

Donations of money and materials are greatly appreciated and put to good use. To donate money to the Hearts and Hands program that will be used to buy materials, call Glew at FUMC, 242-5868.

To volunteer with the group or to apply for assistance, call Meyer at the RSVP office, 243-7787.

Ask About Our Weekend Tours

April - November



BICKELHAUPT ARBORETUM CLINTON, IOWA

OPEN DAILY DAWN TO DUSK - FREE TOUR 242-4771

First United Presbyterian Church of Clinton, Iowa

Address: 400 Fifth Ave. South, Clinton IA 52732

Phone: 563-243-1124 Fax: 563-243-1143

Website: www.firstunitedpres.net

Email: kolleen1upc@yahoo.com



Worship on Sunday Mornings at 9:30 am

Followed by Fellowship Refreshments

Sunday School for children & adults at 11:00 am

Guests are always welcome!

Ask about our Small Groups and Mission Projects



Receiving Christ ... Reaching Out ... Sharing Love

"Better Than The Bank"



{563} 242-0531
1200 N 2nd St.
Clinton, IA 52732



THE TOWER *at Eagle Point Park*



Miles Dirt Days Event Schedule May 21st, 22nd, & 23rd

- Carnival • Mini Rod Tractor Pull
- Mud Volleyball/Mud Bog
- Antique Tractor Pull • Kid's Pedal Pull
- Illini Pullers Tractor Pull • Live Bands
- Pancake Breakfast
- Proceeds to Miles Fire Department!

Friday, July 2nd

The Original KISS ARMY



BEER TENT

Sunday, July 4th

Low Tides & Highways



FOOD VENDORS



Fun Cards

Admission to Clinton Riverboat Days is a one time purchase of a Fun Card. (Children 9 and under Free)

2010 Fun Card & Day Pass Pricing

2010 Fun Card Purchased before June 30th	\$12
Friday Day Pass Only	\$7
Saturday Day Pass Only	\$7
Sunday Day Pass Only	\$5



Saturday, July 3rd Confederate Railroad

Visit our website for more information — www.RiverboatDays.org



ASHFORD

Story continued from 25

commencement in 1930 and from 1932 to 1954 the College's teacher education program prepared 62 percent of all teachers who worked in the schools of Clinton County.

In 1950 the College was first accredited by the North Central Association Colleges and Schools, and has since maintained that accreditation. The year 1958 was a year of building for the College. Construction of a spacious two-story library building was completed, as well as the St. Francis Auditorium-Gymnasium and the Mount St. Clare Speech and Hearing Center. In the early 1960's, expansion continued with the construction of Durham Hall, a residence hall, in 1962 and the Science Building in 1965.

ASHFORD, continued on 30



SALES & SERVICE OF ENERGY-EFFICIENT NAME BRANDS

Amana **BOSCH** *Make Life eazier*

LG **MAYTAG**

ORECK **Zirkelbach HOME APPLIANCES**

225 5th Ave S | Downtown Clinton

Deanna's **JAVA STATION**

- Coffee
- Lattés
- Mocha Frios
- Creamy italian Sodas
- Smoothies

1938 Lincoln Way
 (Paul's Discount Parking lot)
 Clinton, Iowa
 (563) 243-6690
 deannasjava@aol.com

Hours:
 Mon.-Fri. 6am-6pm
 Sat. 7am-6pm
 OUTSIDE SEATING AVAILABLE

OVER 30+ FLAVORS

MALONEY EQUIPMENT, INC.

Route 84 South, Fulton, IL
 815-589-4960

www.MaloneyEquipmentInc.com
 Mon.-Fri. 7:00 a.m. - 5:30 p.m.;
 Sat. 7:00 a.m. - 3:00 p.m.

Grand Mound Communications
 Offering high speed Internet in the Eastern Iowa Propane area.
 This includes Clinton, Fulton, Camanche and Low Moor areas.

For more information give us a call at: **563.847.3000**
 or toll free at 1-888-732-1378

Grand Mound Communications
 doing internet right since 2005



ASHFORD

Story continued from 29

In April 1979, MSC received approval to award baccalaureate degrees. The first degree offered was Business Administration. The Durgin Educational Center was completed in April 1998. The first graduation ceremony was held there in May. Dedication ceremonies were held in September.

In December 2002, MSC became The Franciscan University and in May 2004 it conferred its first Master's degrees. Bridgepoint Education, Inc., a higher education organization, acquired the institution in 2005, and its name was changed to Ashford University. In recent years the university has seen plans for a new campus in Clinton which would accommodate up to 4,000 students. This plan is expected to take place over

a span of five to seven years and will increase the quality of education available to the students.

At Ashford, students can choose from more than 25 undergraduate programs, including accounting, business administration, clinical cytotechnology, computer animation and graphic design, computer information systems, education,

organizational management and social science. If students are looking for graduate studies, Ashford offers several programs including Master of Business Administration (MBA).

In addition to classes at its Clinton campus, Ashford offers online courses, providing another way for students to complete their education.

The Perfect Gift Certificate

Dual Person Massage Suite or Luxurious 2 Hour Spa Package

SPA PACKAGES INCLUDES: • Full body massage • Foot & hand reflexology
• Exfoliation & waxing • Skin care demonstration

We offer a number of other services. **Call or visit for your gift certificate today!**

VAN KAMPEN THERAPEUTIC MASSAGE & WELLNESS
113 4th Ave. S., Clinton, IA • 563-242-7295

Flowers On 5th
we do it with style.

expressions for any occasion...

Call or come in and let Bob or Jeanne design your special floral arrangement with over 15 years of experience for any occasion...

233 Fifth Avenue South
Clinton, Iowa
563-242-ROSE (7673)
Open daily Monday thru Saturday

Howes & Jefferies Realtors
Serving you since 1923
Creating a community one sale at a time.



345 5th Ave. South
Clinton, IA 52732
Toll Free: 866-645-3265
www.howesandjefferies.com

Relocating?

Call our certified relocation specialist for a FREE information package.

- *Housing *Schools
- *Cultural & Sports Activities
- *Spouse Employment Information
- *Cost of Living Comparison



Clinton Community College

The history of Clinton Community College covers more than 60 years. In March 1946, a public referendum was presented to the citizens of Clinton. The answer was a resounding “yes” and on Sept. 9 of that year, Clinton Junior College officially opened its doors.

Housed in the Clinton High School building, more than half of the first class of 86 students were World War II veterans having recently returned home from the war. The college continued to grow through the years and eventually outgrew its shared quarters at the high school.

CCC, continued on 33



**Lumbar Cervical
Decompression**

**Non-Surgical Relief from
Neck or Back Pain**

A team approach to natural health

- Low Back, Hip & Leg Pain
- Neck, Shoulder & Arm Pain
- Headaches & Migraines
- Stiffness & Numbness
- Carpal Tunnel Syndrome
- Auto Injuries
- Fibromyalgia
- Work Injuries
- Disc Problems
- Whiplash



242-5515

**1721 N 2nd Street
Clinton, Iowa**

Open Monday - Saturday

Complete rehabilitation/industrial facility

Accepting: Medicare • Medicaid • BCBS/Alliance Select

Auto Accidents • Work Comp • AMI Credentialed Physician • Most Insurance PPOs HMOs

www.cadoganchiropractic.com

CCC

Story continued from 32

It proudly moved into a new building on September 6, 1965, with an enrollment of 555 day students. The college is still located in that building at 1000 Lincoln Boulevard in Clinton but many changes have occurred in the past 30 years.

One of those changes came in 1966 when the name was changed to Clinton Community College and it became a part of the Eastern Iowa Community College District, which also includes Scott and Muscatine Community Colleges. The college continues to be a part of that district today.

The college's building has also experienced changes with two major structural additions. In addition, in



1995 the college opened the Graphic Arts Technology Center of Iowa - now the CCC Technology Center - on Manufacturing Drive in Clinton, approximately one mile from the main campus. The Center was constructed through a unique partnership of education, business and government with funding coming from all three entities.

CCC, continued on 34

Free Golf
and other stuff!

BUCK'S BARN

www.bucksbarnfreegolf.com

Location is everything!!

Close to: Medical Services, Grocery Store, Restaurants, Churches, and other shopping.

The Regency

839 13th Ave. N., Clinton, IA

Clinton's Premier Housing for Persons 62+ Independent Living at it's BEST!

**1 and 2 bedroom, Spacious floor plans
Appliances furnished, floor coverings, drapes, security entrances, all on one floor. Handicap accessible.**

Van service to doctors, grocery store, hairdresser

Call for information or a tour call Tracey 563-242-1010

tminnick@essexseniorliving.com



CCC

Story continued from 33

The 22,000 square-foot facility is a unique training facility and technology resource for the graphic arts industry and also houses our Mechatronics program, which combines mechanical, electrical, computer technology and robotics.

In 2007, the Adult Basic Education and Community Education programs relocated to a new building, the CCC Learning Center, located at 944 Lincoln Boulevard. This space offers flexibility in classroom scheduling and functionality. Spring semester 2010 welcomed students to the new science addition which houses two state-of-the-art labs plus a larger

prep room and faculty offices.

Clinton Community College's activities stretch beyond the city limits of Clinton and Jackson Counties. Through a cooperative agreement with the City of Maquoketa and the Maquoketa School District, the College offers credit and non-credit classes to that community at the new CCC Maquoketa Center which opened in the summer of 2009. Similar arrangements with other school districts allow the college to offer classes in Camanche, DeWitt, Bellevue, Preston, Goose Lake and many other area communities.

As a comprehensive community college, Clinton Community

College offers much more than college credit course work. The College's various non-credit departments provide Community Education classes, Adult Education classes and Business and Industry training. Thousands of area residents annually take advantage of these educational opportunities.

The first dean of the college was Paul B. Sharar and the College's foundation bears his name. As his son, Paul H. Sharar, recalls, his father "had a vision of education as the way people learn to live more useful lives for themselves and for their fellow citizens so they feel the joy of accomplishment above and beyond the common-place that might have been."

Today Karen Vickers

leads Clinton Community College having held many positions including Dean of the College and Interim President prior to becoming President in 1996. The College has added new technologies such as the state-of-the-art Virtual and Nursing Labs, and has extended the use of technology into the library and onto each desk top. Joint admissions agreements allow students to make a smooth transition upon completion of their CCC program. Partnerships continue throughout the Clinton area and have expanded to include communities such as DeWitt, Calamus/Wheatland and Bellevue. These improvements are evident to students with enrollment reaching record levels in fall 2009 and spring 2010.

Gifts For Every Occasion!



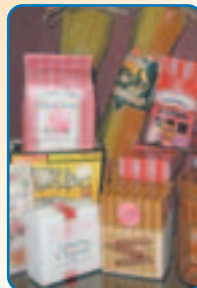
Hand Painted Lolita Glasses



Plate Racks & Plates



Lap Quilts



Gourmet Foods



Breast Cancer 'Fight Like A Girl'



Scarfs

Girls Day Out — 2nd Saturday of Every Month

GIFTS
galore
"Gifts to Give, Treasures to Keep"

We also carry:

- ∞ Willow Tree
- ∞ Jewelry
- ∞ Country Valances

- ∞ Pottery
- ∞ Webkinz
- ∞ Yard Flags (Large & Small)
- ∞ Candles

Previously Appreciated Furniture
Wine and Wine Decor ∞ Harley Mugs
Seasonal Items and Much More

Check out our new Trash To Treasures Rooms
Over 900 framed prints in our Picture Gallery!

247 5th Avenue S., Clinton, IA • 242-9968 • M-F 10-5:00 & Sat. 10-4:00

AHMED ELAHMADY, M.D.

BOARD CERTIFIED
and RECERTIFIED
GASTROENTEROLOGIST



Ahmed Elahmady, M.D.

- Dr. Elahmady specialized in the treatment of diseases of the esophagus, stomach, colon, liver, gallbladder and pancreas.
- Dr. Elahmady has contributed to the science of gastroenterology through several publications in national and international journals.
- Dr. Elahmady's **state-of-the-art reputable work** has been published in the *American Journal of Physiology*, *Gastrointestinal and Liver Physiology*, *Digestive Disease and Science*, *GUT*, *American Journal of Surgical Pathology*, and many other national and international journals.
- Dr. Elahmady **resides** in the community and is **readily** available

**MOST INSURANCE ACCEPTED
NO REFERRAL REQUIRED**

QUALITY SURGICENTER
2745 Lincolnway, Clinton, Iowa

HOURS: Mon., Tues. & Fri 8am to 5pm; Wed. & Thurs. 8am to 8pm and Saturday 9am to 1pm

(563) 242-3208

"A Commitment to Excellence in Patient Care"

Clinton schools

Administration Center Staff

Superintendent
Richard Basden, 243-0460

Business Services
Business Manager Jan Culbertson, Dee Ann Sullivan, 243-9600

Payroll and Insurance
Connie Adkins, Toni Scheider, 243-9600

Century 21 Project Coordinator
Sheila Mooney, Loras Osterhaus, 243-9600

Community Relations
Richard Basden, Jean Rursch, 243-9600

Curriculum and

Instruction
Deborah Olson, 243-9600

Custodial
Rich Creecy, 243-9600

Food Service
Sarah Kistner, Julie Voss, Jeff Weaver, 243-7780

Foundation Executive Director
Taryn Determan, 243-9600

Human Resources
Director Jess Terrell, H. R. Secretary Kathy Porter, H.R./ Guest Services Secretary Constance Adkins, 243-0463

Printing/Graphics
Tom Wade, 243-9600

Student Information
Julie Matzen, 243-0465

Study Connection
Ida Lorenz

243-9600
Technology Department
Kurt Flathers, Brad Hancock, Kelly Larkey, Julie Stoller, 243-9600

Clinton School Directory

Clinton High School 243-7540
Lincoln Alternative High 242-8137

Elementary schools

Bluff School 242-1606
Elijah Buell School 243-4288
Jefferson School 243-0479
Whittier School 243-3230

Middle schools
Lyons Middle School

242-7858
Washington Middle 243-0466

Parochial Schools
Prince of Peace Catholic Academy & College Preparatory (9-12) 242-1663

Prince of Peace Preschool 242-9258

Universities and Colleges

Ashford University: Admissions, 400 N. Bluff Boulevard, Clinton 242-4153
General Office, 400 N. Bluff Boulevard 242-4023
Clinton Community College 1000 Lincoln Blvd., 244-7001



TIMED OUT
Again
OPEN 7 DAYS A WEEK!

FOOD • FUN • MUSIC
OPEN DAILY 11am - 2pm • Sun. Noon - 9pm

1815 Manufacturing Dr., Clinton
563-242-0311

Deja Vu Furniture & Accessories
101- 5th Avenue South
Clinton, Iowa 52732
563/242-3356

MWThF: 10-5
Sat: 10-3

dejavu@iowatelecom.net




You Mean Things!
Formerly Sewing Machines & More

1015 13th Ave. N.
Suite E, Clinton, IA
563-242-6135
Between Farm Bureau Financial Services & Sprint
www.iasews.com

- 2500 Bolts of Fabric
- Sewing Machines & Supplies
- Classes Available
- Gift Certificates

Hours: Mon. 10-8, Tues.-Fri. 10-5, Sat. 10-3, Closed Sundays



ANDOVER

MEAT

1373 Washington St.
Andover, Iowa

563.682.7757

Canine Capers

Every fall dog owners are invited to bring their best friends out to Eagle Point Park for the Canine Capers two-mile run or two-mile walk.

Pet owners can register the day of the race or pre-register to compete in the walk or run. Awards will be given to five places in each division. The adult divisions are separated by gender, whether a person will be running or walking and whether a person will be racing with or without their dog. A children's run/walk race is also available. Other fun entertainment, such as funny pet contests and dog costume contests, take place during this annual event.

All dog owners are invited to come and join in the fun. Proceeds will be used to help the animals at the Clinton Humane Society shelter.



Freedom Trees Memorial

After the events of Sept. 11, 2001, many communities held ceremonies and memorial services to grieve, comprehend and remember what happened at the World Trade Center, the Pentagon and the Pennsylvania field where planes piloted by terrorists crashed on that day.

In Clinton, a special place at the corner of Main Avenue and Mill Creek Parkway was turned into a spot of remembrance of the events of 9/11.

Since that time, nine years ago, remembrance ceremonies have taken place there.



TOTAL REALTY CO.



706 6th Ave.
DeWitt, IA 52742

FARMS - HOMES
COMMERCIAL - AUCTIONS
Office: 563-659-8185
www.totalrealtyco.com



VOSS BROTHERS PLUMBING & HEATING

- Residential
- Commercial
- Industrial




CALL
242-6815

301 South 2nd Street, Clinton, Iowa

WIERSEMA CHARTER SERVICE

2010-2011 tour books have been printed.
Call for your copy if you did not receive one in the mail.



For Info and Trips Call 800.829.2130
Morrison, Illinois www.wiersemacharter.com

Witt's

Small Engine Clinic



2316 16th Street NW
Clinton, Iowa 52732
563.243.8322

Service On Most Major Brands of Gasoline Engines

Finally Friday at the river

The Clinton Convention and Visitors Bureau is holding Finally Friday at the River events. These musical events are held from 5 p.m. to 8 p.m. in the bandshell at Clinton's Riverview Park.

This summer's event dates are:

- June 18 – Dani Lynn Howe Band
- July 9 – Slough Buoy
- Aug. 13 - Bones
- Sept. 24 – Coupe de Ville

Contact: Clinton Convention and Visitors Bureau at 242-5702.



Lyons Farmers Market

This is a seasonal, open-air market open from May through November from 4 to 6 p.m. on Wednesdays and 8

to 11 a.m. on Saturdays at Roosevelt Street and Main Avenue in the Lyons Shopping district. People are invited to shop for their favorite "straight from the garden" goodies, from delicious sweet corn and ripe, red

tomatoes to fresh green beans and "new" potatoes. Appetizing, freshly-baked goodies like pies and coffee cakes can also be found at the market.

Contact: Ken Shelly Jr. at (563) 577-2216.

Hawthorne Woods

A P A R T M E N T S

563-242-7662

1261 GATEWAY #3 - CLINTON



EXCEPTIONAL 1, 2, & 3 BEDROOM APTS.

- Laundry Facilities
- Close To Restaurants, Shopping, and Medical Facility
- Central Air Conditioning
- Professionally Managed by Property Managers, Inc.

*Other things may change us,
but we start and end with family.*

- **Traditional and Cremation Services**
- **Prearrangement Planning**
- **Funeral Home & Cemetery at One Convenient Location**

The passing of a loved one is a painful experience. As a family-run business for generations, we understand the need for services which preserve the memory and dignity of your loved one. As a full-service funeral home, we can help ease your burden by making the necessary arrangements and assisting you in making tough, emotional choices in a caring, professional manner. Our goal is to make your family's transition easier in your time of need.



LEMKE FUNERAL HOMES AND CLINTON LAWN CEMETERY

Family Owned and Operated

New Location: 2610 Manufacturing Drive, Clinton 563-242-0853

Lemke North: 2304 No. 2nd St., Clinton 563-242-2626

Symphony of Lights

Symphony of Lights is Clinton's holiday festival and held each year between the last week of November through Dec. 30. Visitors to the festival will enjoy the viewing of more than 40 lighted displays, 500,000 plus supporting lights, castles, streams and a gingerbread lodge that fill a 1.1 mile loop of Eagle Point Park located off U.S. 67 North. Its beauty and splendor will take you back to those holiday memories of your childhood.

The Symphony of Lights was brought to Clinton in November 1996, by two non-profit organizations — the Clinton Jaycee Foundation and Clinton Symphony Orchestra. These organizations founded the event as a fundraiser, but quickly learned it was much more.

The Symphony of Lights brought a sense of pride to the community that had been lacking for a long time. It awakened volunteerism in all ages.

Since its inception the number of volunteers has grown tremendously. It is estimated that the numbers involved now reach close to 400.

During its sixth year the Clinton Jaycee Foundation became the sole organizer of the Symphony of Lights. This change occurred due to a reorganization and a change in focus of the Clinton Symphony Orchestra. All proceeds go to enhance and continue the Symphony of Lights, fund the programs of the Clinton Jaycee Foundation and make improvements and upgrades within Eagle Point Park.

SYMPHONY, continued on 41

Discover The Wonder of a Child's World!



Treat yourself and your family to an interactive play environment!

Permanent and traveling exhibits, dress-up fun, trains and KAPLA blocks.

THE CENTER HAS IT ALL!

YEARLY MEMBERSHIPS

- Association of Children's Museums "Reciprocal Membership" \$100
- Family: \$60
- Grandparent: \$50
- Individual: \$40



OPEN Wed. - Sat. 10am-4pm • Sun. 1pm-4pm • Daily Admission \$4 per person; age 2-65

Private Themed Rooms Available For Birthday Parties & Special Events.



Felix Adler
Children's Discovery Center

www.adlerdiscoverycenter.org

332 8th Avenue South • Clinton, IA
 563.243.3600

This project funded by Collaboration with the Vision Iowa project.



- Eagle Point Park 5 mi
- Valley Oaks Golf Course 2 mi
- 67 Rooms
- 20 Suites
- 3 Floors
- Interior Corridors
- Cable TV
- High Speed Wireless Internet
- Microwave
- Mini-refrigerator
- Indoor Pool
- Fitness Center
- Deluxe Continental Breakfast
- Happy Hour Daily

2800 South 25th Street • Clinton, IA 52732
Phone 563-242-9300 Fax 563-242-9300

Visit our website at www.hiexpress.com/clintonia
 E-mail clintonhiexpress@yahoo.com

SYMPHONY

Story continued from 40

Symphony of Lights 5K Run

The Symphony of Lights 5K Run will take place Nov. 28 at Eagle Point Park in Clinton.

Eagle Point Park is located just off U.S. 67 at the north edge of Clinton.

Gates open at 2:30 p.m. with the run beginning at 4 p.m. The course will be entirely within Eagle Point Park on approximately 2 miles of rolling paved park

roads. One mile of the race passes by more than 40 major displays and more than 500,000 lights. The second mile winds through the most northern loop of the park which overlooks Lake Clinton on the mighty Mississippi. These views provide a truly

unique running experience. The price for early registration is \$12 for adults and is \$15 after the early registration date. Adult registration includes a long sleeve T-shirt. Children's registration for ages 6 to 12, costs \$5 but does not include a T-shirt. Any children under age six will be admitted for free. Free refreshments will be available after the race in the lodge. Prizes will go to overall male/female finishers and the top three runners in each age group. Race day number and T-shirt pickup/registration is at the lodge of Eagle Point Park from 2:30 to 3:45 p.m.

Entry forms can be found at the Clinton Area Chamber of Commerce, 333 Fourth Ave. South. All proceeds of the 5K Run go towards the Symphony of Lights.

SYMPHONY, continued on 42



QUALITY - TECHNOLOGY - DETAIL MATTERS!
You Get What You Pay for at...
B&J Transmission & Auto Repair
Rebuilding Since 1981
I BUY CARS & TRUCKS! AND I SELL PARTS!
 815.589.2113 or 800.527.2113 Hwy. 136, Fulton, IL

Broken Spoke
Antique Mall

HOURS
 Tuesday thru Sunday
10am - 5pm
 Mondays Closed

Space Available

516 South 1st Street • Clinton, IA 52732 • 563-243-2296

Your Key to Community Banking

Central Bank
 ILLINOIS
 1404 14th Avenue
 Fulton, IL 61252
 815-589-3232 or 800-828-8941
 www.central-bank.com
 Member FDIC

BURKERT CHIROPRACTIC CENTER
 1805 N. 2nd St.
 Clinton, Iowa

Dr. Louie L. Burkert
 34 Years Experience

Open 6 Days a Week
 Most Insurance Accepted
563-242-4555
 after hours call:
563-357-5559

- New Patients Welcome
- Sports Physicals
- Sports Injuries
- Family Care
- Workers' Comp
- Accident Related Injuries



SYMPHONY

Story continued from 41

Symphony of Lights Family Walk

The annual Symphony of Lights Family Walk will take place Nov. 24 from 6 to 9 p.m. at Eagle Point Park.

This may be the only opportunity for you to enjoy the enchanting 1.1 mile view of the displays on foot and at a leisurely pace. Strollers are welcome, but please leave your pets at home. Free refreshments will be available in the lodge. Children will have the opportunity to paint a tile courtesy of Rainbow Pottery.

The price for early registration is \$12 for adults and is \$15 after the early registration date. Adult registration includes a long sleeve T-shirt. The cost for children's registration (6-12) is \$5 and

does not include a T-shirt. There is no fee for children younger than 6.

Due to limited parking within the park, everyone is asked to park at the Lyons Train Depot at 56 25th Ave. North, and use the shuttle bus service to get to the park. Buses will run from 5:45 to 8 p.m.

Several shuttle buses will be running and we anticipate no waiting outside in cold weather. Only vehicles with handicap permits will be allowed within the park.

All pre-registered entrants picking up tickets the night of the event must check in at the Lyons Train Depot. People purchasing tickets the night of the event must buy tickets at the Lyons Train Depot.

There will be no ticket pick-up or sales at the gate of the park. Tickets must be presented to the attendant at the gate for entrance.

A banking relationship you can count on.

A strong banking relationship is a valuable asset and like any relationship, its based on trust. Trust is built over time. The more of the bank's services you use, the more the bank gets to know you. As you manage your accounts well, and pay off your loans on time, the trust grows. In times like these, it's good to know you've got a strong bank behind you.



You've got a strong bank behind you.



CITIZENS FIRST BANK
Banking as it should be.

Member F.D.I.C.

563.243.6000

www.BankAtCFB.com

Toll-Free 877.902.1442

Clinton Camanche
1442 Lincoln Way 403 S Washington Blvd
1329 N 2nd St



Clinton, Iowa

Things to do... with a river view!



2010 Clinton Area Events

April-September – Clinton LumberKing Baseball

May-October – Farmer's Market on Main Avenue

May 15-16 – Main Avenue Craft Show

June-August – Clinton Area Showboat Theatre

June 6 – Clinton Symphony Orchestra Pops Concert

June 8, 15, 22, 29 – Jim Post Portrays Mark Twain on Stage

June 12 – River Wellness Fest

June 18, July 9, August 13, September 24 – Finally Friday at the River

June 15, July 6, August 3, September 7 – Arts at the Arb

June 19 – "JUNETEENTH" Celebration

June 24 – Balloons in June Night Glow Downtown

June 26 – Felix Adler Day

June 26 – Miss Clinton County Pageant

July 2-4 – Clinton Riverboat Days

July 6, 13, 20, 27 – Jim Post Portrays Mark Twain on Stage

August 3, 10 – Jim Post Portrays Mark Twain on Stage

August 15 – Rod & Custom Car Show

August 28 – Butterfly Fest

September 16 – Women's Lifestyle Fair

September 18 – Downtown Fall Festival

October 25 – Mardi Gras Parade

November 21 – Christmas Downtown Open House

November 25-December 30 – Symphony of Lights Display

December 10 – Jingle Bell Jam

LOCAL ACCOMMODATIONS

Best Western Frontier

563-242-7112 or 800-728-7112

Country Inn & Suites

563-244-9922 or 800-456-4000

Holiday Inn Express Hotel & Suites

563-242-9300 or 800 HOLIDAY

Motel 6

563-243-8841

Oak Tree Inn

563-243-1000

Super 8 Motel

563-242-8870 or 800-800-8000

Timber Motel

563-519-5000

Travel Inn

563-243-4730 or 877-237-5261

Wild Rose Casino & Resort

563-243-9000 or 800-457-9975

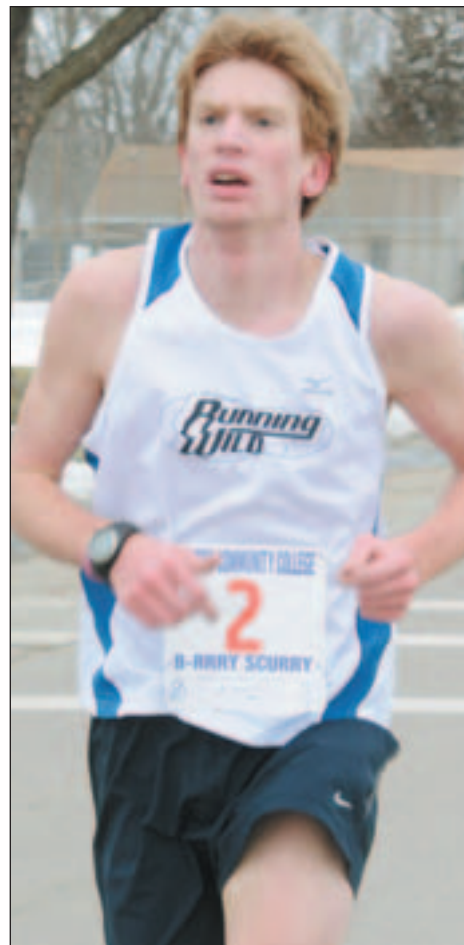


563-242-5702 cvb@clintonia.com clintoniowatourism.com

B-rrry Scurry

Held on the first Saturday in February, this four-mile run/walk celebrated its 29th year in 2010. Approximately 1,000 people participate in this annual event. Highlights include a wonderful spread of free food following the race, free post-race party, door prizes and specially-designed medals to the winners in 13 age categories.

Contact: Ann Eisenman at (563) 244-7040 or e-mail: a Eisenman@eicc.edu or visit www.eicc.edu/brrry.



Pape Funeral Home is the oldest Funeral Service provider in Clinton County, tracing their roots back one-hundred and forty-four years to 1856. In 1856, Henry P. Hobein started the first funeral service in Clinton County located at 2411 Garfield Street. He later sold the business to Martin Bormann while he located in the Lyons District on Main Avenue.

In June of 1923, Floyd N. Pape purchased the business and relocated it to 2323 North 2nd Street. In October of 1934 Floyd N. Pape relocated the Pape Funeral Home to its present location at 2308 Pershing Blvd. in Clinton.

In 1947, Robert L. Pape joined his father in the business and in 1978 his son, Brian R. Pape, joined the family business. Brian R. Pape is the third generation funeral director in the Pape family to serve the people of Clinton and its vicinity for over eighty-six years.

David Ludemann joined Pape Funeral Home eleven years ago and became partners with Brian Pape in 2006.

Let us help your families needs.

Pape Funeral Home
2308 Pershing Blvd., Clinton • 563-242-3344

Downtown Holiday Open House

Come "Home for the Holidays" in downtown Clinton the Sunday before Thanksgiving and enjoy

shopping in antique and specialty shops, dining in unique restaurants, horse-drawn carriage rides and visits with Santa Claus.

Contact the Downtown Partnership, 333 Fourth Ave. South, Clinton, 242-5702



55% OFF ALL CABINETS

Omega Cabinets

Let Us Help You With All Your Kitchen & Bath Needs!

Dave & Terri

WE NOW HAVE TWO DESIGNERS ON STAFF!

DAVE FULLER

Kitchen & Bath Design Center

115 4th Avenue South, Clinton, Iowa 52732 • 563-243-7514
Mon. - Fri. 8am - 5pm, Sat. 10am - 5pm

The Corner Deli And Catering

Stop in the Deli for Daily Hot Entree Specials

Also Serves 16 Varieties of Blue Bunny Ice Cream

Located Downtown on the corner of S. 3rd St. & 5th Ave. S.
246 5th Ave. South Clinton, IA
Phone 563-242-5545
Fax 563-242-5575

Custom-Pak
DESIGN & BLOWMOLDING

THE BLOW MOLDING LEADER

86-16th Avenue North, Clinton, IA
563.242.1801
Fax 563.244.5338

1401 Lake Street, DeWitt, IA
563.659.2100
Fax 563.659.1808

www.custom-pak.com
sales@custom-pak.com

Lyons Christmas Walk

Lyons Historical District of Clinton celebrates the holiday season with dozens of window displays with “live” actors, family activities, food and music. The event this year will take place on Dec. 5.

Contact the Lyons Business and Professional Association, Attn: Sheralyn, at 242-2663



PAULS

DISCOUNT STORE

Voted Best:
Hunting & Fishing Supply
Sporting Goods
Landscaping
Pet Supplies



• HIGHWAY 30 WEST IN CLINTON •



NOT JUST ANOTHER BIG BOX...



Clinton's First & Iowa's Largest Homeowned Discount Store

Come see why out-of-towners have made us a regular stop when visiting Clinton. At Paul's you'll find thousands of unique and hard-to-find items. You'll also find brand names like Nike, Under Armour, Carhartt, Skechers, Born and many, many more... brands you won't find at other discounters.



Name Brand Merchandise At Discount Prices

Open Weekdays 8:00 AM to 9:30 PM • Open Sundays 8:00 AM to 8:00 PM!

Family Owned & Operated! Serving The Clinton Area For 45 Years!

Clinton's Premier Steakhouse

Featuring...

**Fresh-Cut Steaks,
Prime Rib, Seafood
& Nightly Specials**

Tastefully prepared by Chef Matt



Try one of Amy's famous ice cream drinks!



*Victorian
Landmark Dating
Back To 1878*



**2301 McKinley St.
Clinton, IA**

Reservations (563) 242-3134

Hours:

**Tuesday-Thursday 5-9pm
Friday & Saturday 5-10pm**

Ericksen Community Center

There is a lot to keep a retired person busy in the

lower level of the Ericksen Community Center, 1401 11th Ave. North.

The office is staffed by an employee who meets and greets people who would like to use some of the facilities.

The game room has five pool tables and one table tennis setup.

There also is a large gym available, which is used by walkers who come out in the morning and then over the noon hour.

In addition to the pool tables, there also are a knitting club, ceramics clubs and other activities that are available for both men and women.

For more information, call 243-1260.



Local activities

Golf Courses

Canyon Creek, R.R. 2, Iowa 136, Clinton, 243-3534

Clinton Country Club at the Oaks (Semi-private), 3330 Harts Mill Road, Clinton, 242-7221, 242-7032

Fulton Country Club (Private), 20727 Cattail Road, Fulton Ill. (815) 589-

Prairie Ridge Golf Course, 903 W. Morris St., Morrison, Ill. (815) 772-8989

Skating Rinks

Roller Den 2000
103 21st St., Camanche, (563) 259-1613

ACTIVITIES, continued on 50

CAMANCHE DAYS

August 12-15

Platt Park Camanche

FREE ADMISSION

PARADE SATURDAY AUG. 14 • 11 A.M.

All Events and Times Subject to Change

TODDLER TRACKS



FRIDAY
Aug. 13

CAR SHOW



SATURDAY
Aug 14
9 a.m. - 3 p.m.

KIDS DAY OUT



SATURDAY
Aug. 14

KIDS PEDAL PULL



SATURDAY
Aug. 14
1 p.m.

Rain or Shine

CARNIVAL



THURS.- SUN.
Arm Band Hours
Thurs. 5-9
Sun. 1-5

CAMANCHE CLASSIC



FRIDAY
Aug. 13

GOLF TOURNAMENT



SUNDAY
Aug. 15

FIREWORKS



SUNDAY
Aug. 15
9 p.m.

SOFTBALL TOURNEY

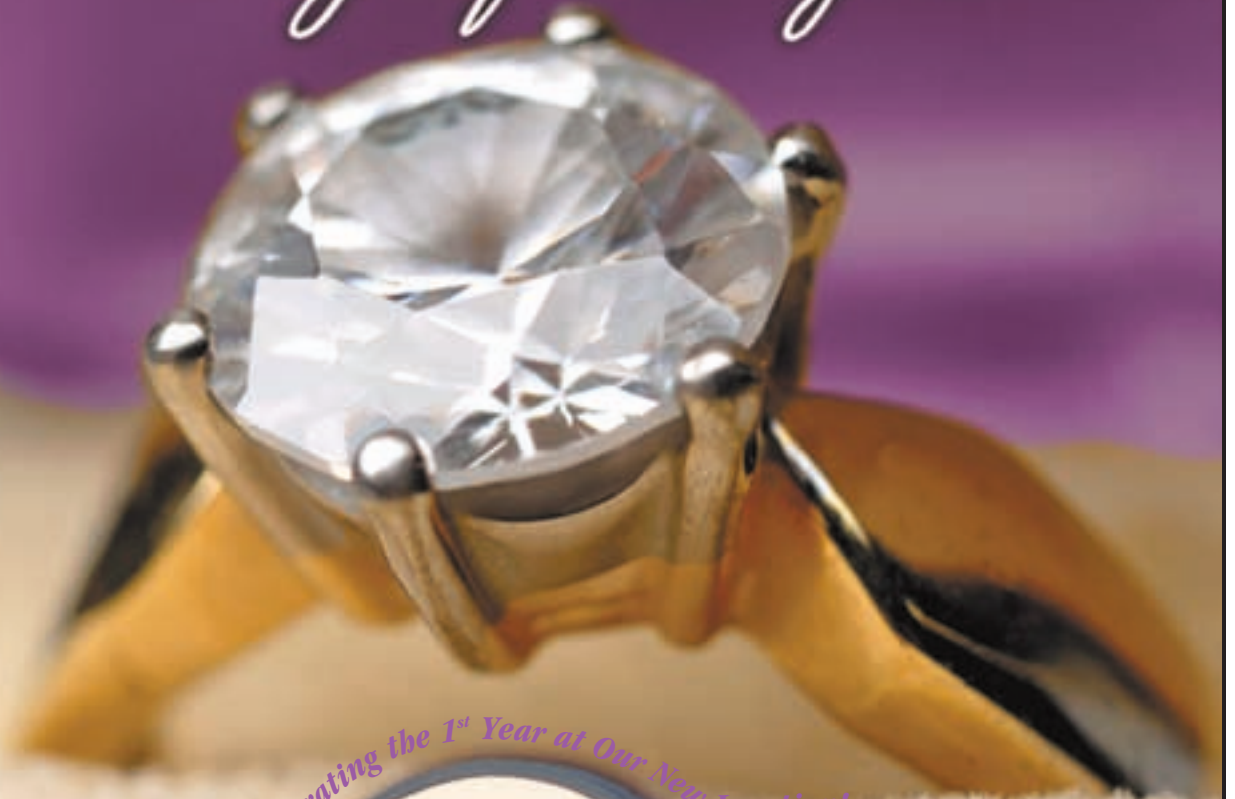


FRI. - SUN.
Aug. 13-15

NIGHTLY ENTERTAINMENT

CAMANCHE DAYS CONTACTS:
Brenda 522-2021/Trevor 259-4425

*four words. two people.
one perfect ring.*



Celebrating the 1st Year at Our New Location!

**DON'S
JEWELRY**



**DON'S
JEWELRY**
"Put Trust In Your Love"

200 Main Avenue • Clinton, Iowa • (563) 242-2663 • donsjewelryclinton.com

Member of **RJO**

ACTIVITIES

Story continued from 48

Bowling Lanes

Fulton Recreation Lanes
1601 Ninth Avenue,
Fulton Ill.,
(815) 589-3215

Imperial Lanes, 12 Lanes
823 S.Washington Blvd.,
Camanche, (563) 259-1411
Plaza Bowl of Clinton, 20
lanes

1119 N. Second St.,
Clinton,
243-3032

Trails

Riverview Park
Recreational Trail

The Discovery
Recreational Trail was con-
structed in 1986 and, with
ongoing additions through
the years, now extends 4.8
miles from Riverview Park
north along the Mississippi
River to Eagle Point Park.



The trail is asphalt in some sections and concrete in others, offering walkers, joggers and bicycle riders a place to enjoy the river while they exercise or simply take a long, casual walk, watching the mighty Mississippi roll by.

River Biking and Hiking Trail

Twenty miles of this trail extends from Albany

through Fulton and on to Thomson in Illinois. This section will be a part of the Great River Trail, which is planned to extend from the Quad-Cities to Savanna, Ill.

Hunting Preserves

Arrowhead Hunting Club
3529 170th Street
Goose Lake
(563) 577-2267
Beckridge Hunting

Preserve
944 613th Ave
Sabula
(563) 687-2985

Fishing

Fishing access on the Mississippi River is available at Clinton's new handicapped-accessible fishing pier, located between Fifth and Sixth avenues north on Riverview Drive, south of the Clinton Area Showboat Theatre.

Access also available along the Discovery Trail that begins at Riverview Drive and Ninth Avenue North.

Public Boat Ramps are at 30th Avenue North and McKinley Street; 25th Avenue North and Harding Street; Ninth Avenue North on Riverview Drive; Clinton Marina on Riverview Drive; and 19th Avenue South & Fifth Street.

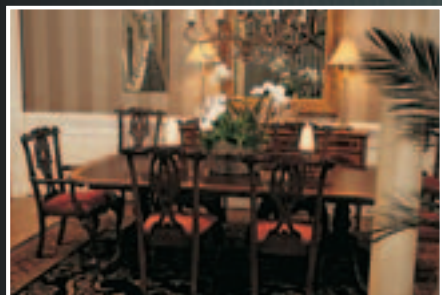


Greg, Carolyn, Dennis & Kenny

Something for everyone!

A formal dining room. A new bedroom.
Or even a family-friendly sectional with full-reclining ends.
Whatever you're looking for, you'll find it.
Hurry in and bring a fresh new look to any room in your home with special savings on the latest name brand styles of the season!

NO INTEREST FOR 12 MONTHS • FREE DELIVERY



Clinton
413 N. 2nd St.
242-2902

DeWitt
1323 W. 11th St.
659-9103

Clinton YMCA- YWCA

Two-thousand-and-nine marked a historic time for the Clinton YMCA and YWCA with the joint venture between the two organizations becoming official. Under the joint venture, both organizations will continue to maintain their separate identities and missions, but have joined together in the areas of fitness and youth

activities. Both organizations have been an integral part of Clinton history. The YMCA was founded in Clinton in 1890. The YWCA was founded in Clinton in 1915. In 2008, the YMCA and YWCA joined in the area of youth activities. It was such a success that in 2009 the YMCA and YWCA decided to collaborate in the area of fitness.

Y'S, continued on 53



Art Under the Stars

Join the YWCA for a magical evening filled with fabulous food, drink, music, and one-of-a-kind works of art by area artists.

The YWCA will again be hosting "Art Under the

Stars" at The Tuscany Special Events Center at Rastrelli's on Saturday, July 10. Art items will be available for purchase through silent auction. Ticket prices are \$50 and tickets must be purchased in advance. This is an event not to be missed!

Contact: Sarah Hood at the YWCA at 242-2110.

Owner: Debra Swanson

Elegance EXPRESS **Consignment plus**

Clothing consignments for weddings, proms and other special occasions.

Alterations Available

211 5th Ave. So., Clinton • 563-242-1680
 Fax: 563-242-1667 • Email: Debra@EleganceExpress.com
 Open Tues. thru Fr. 10-5 & Sat. 10-3 or by Appointment

Grand Mound Communications
 Offering high speed Internet in the Eastern Iowa Propane area.
 This includes Clinton, Fulton, Camanche and Low Moor areas.

For more information give us a call at: **563.847.3000**
 or toll free at 1-888-732-1378

Grand Mound Communications
 doing internet right since 2005

EASTER

We Carry Cooper Tires!

Mechanic On Duty



2303 Manufacturing Drive, Clinton, IA
Phone: 563-242-1929

GATEWAY INC.

MONOGRAMS

209 5th Avenue S. • Clinton, IA
563.243.5057
 Tollfree: **877.243.5057**

"Quality & Service at a Reasonable Price"

Computerized Embroidery & Screenprinting

T-Shirts • Hats • Jackets
School & Business Apparel
Bachelorette Party Shirts
Bath Towels • & More



Clinton's Only Full Service Property!



Newly Remodeled!



Frontier Inn - 2300 Lincoln Way, Clinton, IA
(563)242-7112 • www.bestwestern.com/frontierinn



Y'S

Story continued from 51

Members have access to both YMCA and YWCA facilities, classes, programs,

and services. "Youth activities and fitness were the two areas we duplicated services in the community. With the joint venture, we can now provide expanded programs and services to our clients while decreasing operating

costs," said Lori Freudenberg, Executive Director of the Clinton YWCA and the YMCA-YWCA Joint Venture. "Where else in town can you have access to two great fitness centers or attend

Aquacise, Pilates, Yoga, or a step class while your child attends free swimming lessons? We feel the joint venture is the next step forward in providing our valued members the best possible programs and services available in our community," said Freudenberg.

Contact: Marketing Director, Shannon Sander-Welzien at 242-2110 or e-mail ywpr@iowatelecom.net.

Things offered by the Y's

- Fitness

The Clinton YMCA-YWCA offers over 50 fitness classes that are free with membership. Non-members can also sign up for fitness classes or use the fitness center for a fee. Day passes and 10-punch passes are also available for those visiting the community for a short time.

Y'S, continued on 54

Burke florist
L.L.C.

featuring
Willow Tree

*Say it with Flowers,
Green & Blooming Plants,
Balloons or combine
any of them to make
a Special Gift
for Any Occasion*

563-242-1155 or 1-800-354-8870
210 6th Avenue South, Clinton

Y'S

Story continued from 53

The YMCA is located at 1401 12th Ave. North, just north of the Ericksen Center in Clinton. The YWCA is located at 317 Seventh Ave. South in downtown Clinton. Each location has its own fitness center available to members, equipped with weight machines, free weights, and cardio machines.

Members have full access to both locations and are free to use the location that's most convenient for them. As an added benefit, free baby-sitting hours are available at both facilities during prime fitness times. For more information on the YMCA-YWCA fitness programs, contact Sander-Welzien at 242-

2110.

- Aquatics

All aquatic classes and swimming lessons are held at the YWCA pool. Lap swimming and open swim times are also available. Schedules are available at the front desks or by calling 242-2110.

For the avid lap swimmer, lap swimming is available Monday through Friday from 5:30 a.m. to 1 p.m., and evening hours on Monday, Wednesday and Friday from 5 to 7 p.m. at the Camanche High School pool. Lap swimming is available at no cost to members. Visitors may also use the facility by purchasing a day pass or punch pass. Lane reservation is required at both pools by calling 242-2110.

- Youth Programs

Y'S, continued on 56



STOP IN OUR SHOWROOM AT:
126 W. MAIN, SPRINGBROOK
 (INSIDE THE FLOORS & MORE BUSINESS)
 CALL FOR AN APPOINTMENT: 563-357-8039
 OR BUSINESS PHONE: 563-872-3805

**CUSTOM REFACING,
 ACCESSORIES
 ACRYLIC BATHTUB
 LINER • CABINETS
 COUNTERS**



Bertch
**Kitchen &
 Bath
 Solutions**
remodeling with style

Kevin & LaVonne Nemmers
Owners
 32750 - 150th St.
 Bellevue, IA 52031
 nemmerskbs@gmail.com
 Phone **563-872-3805**
 Fax **563-872-3505**
 Cell **563-357-8039**

Let Us Be Your #1 Party Store

~ Weddings ~

~ Birthdays ~

~ Graduation ~

~ Easter ~

~ Christmas ~

~ New Year's ~

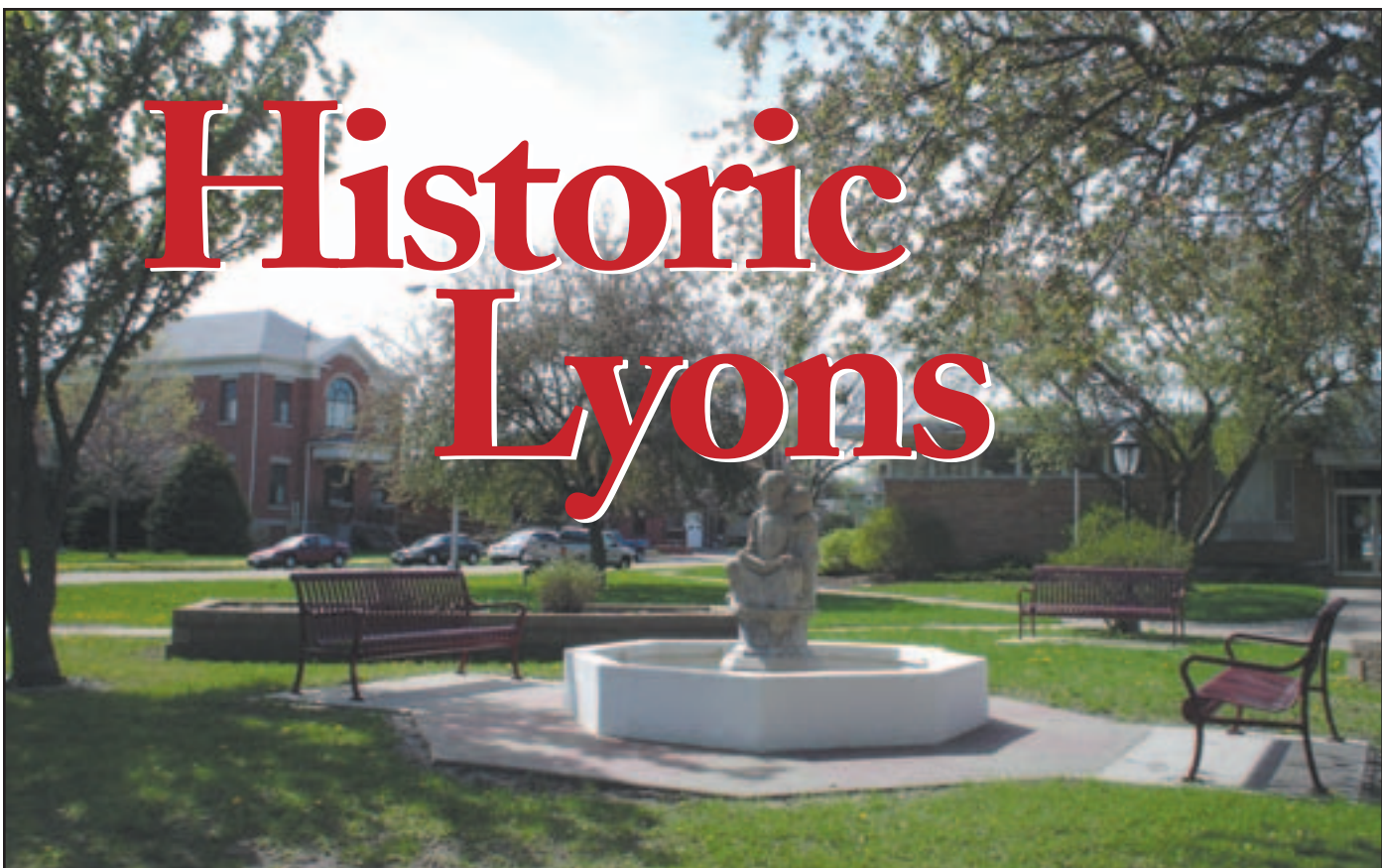
~ 4th of July ~

~ St. Pats Day ~

L&P Party Decorating

2321 N. 2nd St., Clinton • 563.242.1448
 Open Monday thru Saturday

Historic Lyons



Lyons Annual Bike Ride

Jensen Oil/The Bicycle Shop
April 24 - 9am sign-up, 10am ride
Call Chad Jensen 563-242-1712

Main Avenue Craft Show

Saturday, May 15th - 10:00am - 5:00pm
Sunday, May 16th - 10:00am - 4:00pm
• Craft Show • Main Avenue Run
• Antique Tractors & Equipment Show
• Rod & Custom Car Show
• Mason's Annual Breakfast
Call Diane Miller 563-242-2997

Farmers Market

June - October
Wednesday 4:00pm
Saturdays 8:00am
Call Ken Shelly 563-577-2216

Surprises To Come!!



Lyons Business & Professional Association
P.O. Box 3214, Clinton, IA 52732
dons@donsjewelryclinton.com
563-242-2663

Y'S

Story continued from 54

The YMCA-YWCA provides many youth programs to the community each year. Programs such as Little Dribblers, Mini Dribblers, and soccer are very popular within the community. Area youth will enjoy the Youth Center at the YMCA location. The Youth Staff plans and supervises fun activities every day after school in the Youth Center with special programming Mondays and Wednesdays from 3:00 to 5 p.m. There is no cost to members, but registration is required. For more information, Youth Center hours of operation, or to request a registration form, please call Youth Director Janna Linville at 243-1364.

- YWCA Child



Care/Preschool

Children are encouraged to learn through a hands-on environment and playful age-appropriate activities. The YWCA staff also helps to develop children's feelings of self-worth and security through positive reinforcement.

Preschool is available for children 3 to 5 years old. Monthly trips to the library and swim days are just a cou-

ple of the activities that YWCA preschool students participate in. Applications are available for no cost preschool for children who are 4 years old on or before Sept. 15, 2010, and Iowa residents. Call Children's Center Director Roxanne Eversoll at 244-8340 for more information or to register.

The YWCA Childcare is the only licensed childcare center in Clinton open until

midnight. Childcare is provided for children 6 weeks to 11 years from 6 a.m. to midnight. For more information or a tour of the YWCA Children's Center, please call Children's Center Director Roxanne Eversoll at 244-8340.

- YWCA Domestic Violence / Sexual Assault Resource Center

The Clinton YWCA Domestic Violence / Sexual Assault Resource Center began in 1978 as a Sexual Assault Resource Center. It soon became apparent that services needed to be expanded and the center, with much community support and volunteers, began offering shelter and support to victims of domestic violence. The program was further expanded in 1988, when it began its Transitional Housing Program for women and their families who are homeless.

A Great Place... To call Home!



Over the years you've looked out for every detail in your life and made sure things were done. Now is the time to reward yourself, to make living a little easier, and to do what you want, when you want.



308 South Bluff
Clinton, Iowa 52732
563.243.1341

www.sarahhardingofclinton.com





Felix Adler Discovery Center

332 Eighth Ave. South
The Discovery Center
honors the memory of

Clinton native Frank Adler
("Funny Felix, King of
Clowns"), who was a clown
with Ringling Brothers and
Barnum and Bailey circus

DISCOVERY, continued on 58

Designed for your comfort



With extra-quiet rooms and light-proof draperies, and located near the intersection of Highway 30 and 67, this Oak Tree Inn features:

- 123 Beautifully Decorated Guest Rooms
- 100% Non-Smoking
- Wireless High-Speed Internet Access
- 27" TVs with HBO
- Fitness Center
- Microwaves & Refrigerators
- Guest Laundry
- Meeting Room
- Pets Accepted



Clinton, Iowa

US 67 & US 30
2300 Valley West Court, Clinton, IA 52732
(563) 243-1000

CLINTON MEDICAL CLINIC PHARMACY, INC.



(Back L-R) John, Stan, Jerry (Pharmacist), Laurel (Pharmacist), and Noah
(Front L-R) Sara, Lavonne, and Sue



Our Pharmacist is always on hand to advise you and answer your questions about your prescription. We professionally handle prescriptions, over the counter medications and vitamins.

We have been located on Main Avenue in Lyons since 1978, the same building as River Cities Internal Medicine and we're always here to help!

221 Main Avenue, Clinton, IA • 563-242-1724

Open Monday through Friday 9 A.M. to 5 P.M.; Sat. 9 A.M. to 12 P.M.; Closed Sundays
• Free delivery in Lyons, Clinton, Camanche and surrounding areas

DISCOVERY

Story continued from 57

for almost 50 years. Best known for his acts with trained pigs, he also performed for three presidents and was known as the White House Clown. The Discovery Center is a family fun place — a family learning place — a place where children are encouraged to touch and ask why! The center combines interactive displays with hands-on experiences to promote exploring, discovery and learning about our world — a place where children play to learn and adults learn to play! It is a hands-on children’s museum with several educational exhibits and lots of fun things to do. The museum also houses some of Adler’s costumes and per-



sonal memorabilia. Family memberships and Association of Children’s Museums (ACM) memberships are available. Museum hours are

Thursday, Friday and Saturday, 10 a.m. to 4 p.m., and most Sundays, 1 to 4 p.m. The facility is available by appointment for field trips,

special tours and birthday parties. Contact Margaret Kuhl at 243-3600. The Web site is www.felixadler.com.



LA FERIA

Family Mexican Restaurant



**Serving Authentic Mexican Food,
Prepared Daily With Fresh
Ingredients**

Great Drink Specials

**We Welcome Large Parties
Party Room Available**

Family Owned & Operated

**116 5th Ave So.
Clinton, LA**

563-243-0381

Open 7 Days A Week
Mon.-Thurs. 11am-10pm
Fri. & Sat. 11am-10:30pm
Sun. 11am-9pm

ONLY ONE...

nursing home in the region was named one of America's Best by U.S. News & World Report

YOURS.

February 2010, U.S. News & World Report



GENESIS

Senior Living

Westwing

1108 11th Street

DeWitt, Iowa 52742

(563) 659-4216

Historical Society Museum

601 S. First St.

Here, the story of early settlers of this Mississippi River area and the booming lumber business is told.

The permanent collection includes old photographs of the area, memorabilia, period furniture, authentic 1924 kitchen and the Resolute, one of only three manually-powered fire engines on display in the world. Hours: Saturday, Sunday, and Wednesday, 1 to 4 p.m. Handicapped accessible.

Contact: 242-1201



Gateway Contemporary Ballet

P.O. Box 1183

Clinton's resident dance company, Gateway Contemporary Ballet has been bringing the delight of classical and modern dance to the area for more than 15 years — whether it's a full-length ballet in spring, free riverfront concerts in summer or a showcase of guest artists in the fall. The GCB also performs with other artistic organizations and for various clubs, festivals and benefits, helping to uphold Iowa's reputation as one of the most culturally aware places in the United States.

Contact: 242-1002 or www.gatewayballet.org.

It's Tough To Give Up Your Own Home.



Let Us Help You...

Remain in Your Own Home. Respite Care, Personal Care, Housekeeping, Transportation, Meal Preparation, Medication Monitoring, and Other Personal Needs.

**No Commitment. No Contract.
We Schedule Daily To Meet Your Needs.**

We do it ALL - and we do it YOUR WAY! Just Ask Us!!

Serving over 250 families in Clinton County

TLC IN HOME CARE

242 North Bluff, Clinton, IA • 242-2977 • Cell: 249-3868

Soaring Eagle Nature Center

3923 N. Third St.
The Nature Barn is open for special events throughout the

year and during the school term for environmental education classes. Hiking trails, natural prairie, wetlands area and one-room school are located at the Nature Center.

Contact: 242-9088



Annual Eagle Watch

The U.S. Army Corps of Engineers, Thomson Park Rangers, U.S. Fish & Wildlife Service and the Soaring Eagle Nature Center co-host a special Eagle Watch Day during peak season on the upper Mississippi River the first week of January. Visitors will enjoy outdoor eagle viewing at Lock & Dam 13 and other

area viewing sites. Eagle seminars, wildlife exhibits and children's activities are held at Clinton Community College throughout the day. Municipal Transit Administration courtesy bus service shuttles visitors from college to viewing areas. Be sure to bring your camera!

Contact: Thomson Park Rangers, Box 398, 823 Main St., Thomson, Ill., (815) 259-3628.

Clinton Symphony Orchestra

Clinton is one of the smallest cities in the United States to support a full, professional symphony orchestra that performs classical concerts throughout the season.

Guest soloists, from near and distant parts of the country are featured regularly. Enjoy big-city excitement of live symphonic music in the warm hospitality of the Clinton community.

Contact: Robert Whipple at (815) 625-0922 or e-mail execdirector@clintonsymphony.org

i Simplify.

SIMPLIFY & SAVE with our new **UNLIMITED** nationwide plans that include:

- Nationwide Nights & Weekends starting at 5 PM
- Best prices on the latest phones in many styles
- *100 Bonus + Free Activation to switch
- 30 Day Risk-Free Guarantee

Powered by the nation's largest high-speed voice & data network!

UNLIMITED "Individual" Plans*

Talk \$49⁹⁹	Talk + Text \$59⁹⁹	Talk + Text + Web \$79⁹⁹
----------------------------------	---	---

UNLIMITED "Family" Plans* (includes 2 lines)

Talk \$79⁹⁹	Talk + Text \$99⁹⁹	Talk + Text + Web \$139⁹⁹
----------------------------------	---	--

WHY PAY MORE.

The i's have it!

30 Day Risk-Free Guarantee*

**Fuller Wireless
HyVee**

901 S. 4th Street • Clinton, Iowa
241-4227

**Dave Fuller
Kitchen & Bath**

115 4th Avenue S. • Clinton, Iowa
243-7514

CALL 1.888.884.0500 CLICK www.iwireless.com VISIT any of our 250 locations

*See pricing, restrictions, two-year agreement, 30-day service lock and free activation is available to customers who port the number from another wireless carrier and sign a two-year agreement or purchase \$50 and higher, new phone. Taxes, fees, and other conditions may apply. See store for details and 30 Day Guarantee guidelines. © 2010 i wireless.



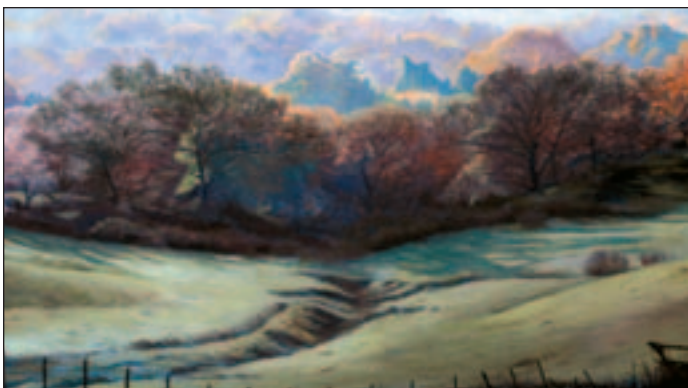
Curtis Mansion, Women's Club

This restored Victorian home of Lumber Baron George M. Curtis is an example of period architecture with its original Tiffany glass windows, delicately carved banisters, ornate wood trim and massive fireplaces. Rich in the history of the area, this mansion makes

an elegant backdrop for special events.

It is listed on the National Register of Historic Places. Tours are available by special appointment or during the summer months from 1:30 to 3:30 p.m. every Wednesday. There is an admission fee.

Built in 1885, it is one of the few remaining homes built during the years of the Clinton lumber barons.



River Arts Center

New exhibits, in a variety of media, are hung every five weeks.

The gift shop contains gift items on consignment, created by artists from the Clinton area and from all over the United States.

During the year, classes and workshops taught by local teachers and well-known Iowa artists, are held in painting, pottery, calligraphy, ceramics and drawing. Annual events include a bus trip to the Art Institute of Chicago and a local Garden Walk. Hours are Tuesday to Sunday, 1 to 4 p.m. Closed Mondays and the month of January.



"Our Name Says It All"

**2328 VALLEY WEST COURT
CLINTON, IA
(BEHIND WAL-MART)**

Hours: 6am-8pm Sun.-Thurs.; 6am-9pm Fri. & Sat.



Homemade Breakfast



Come Check Out Our Daily Specials

Try One of Our Famous Malts, Shakes or Sundaes

All Of Our Sandwiches Are Made With Fresh Ground Beef

Try Our Homemade Pork or Chicken Tenderloin Sandwiches

"Sandwiches That Are Satisfying"

Welcome to Fulton

The first residents of this area were the Winnebago, Pottawattamie and Fox Indian tribes. Many American Indians settled here because of the good hunting grounds and because Fulton was situated in a narrow part of the river, which made the Mississippi River easier to cross.

In 1835, John Baker built the first building here. It was a log cabin in the present location of the Harbor Crest Nursing Home. The settlement was originally called Baker's Ferry but, the town's name was changed to Fulton in 1837 in honor of the famed inventor.

The second building was a small cabin on the riverbank in what is now Riverfront Park. It



became Fulton's first store. The first frame structure was built in 1838 on what is now the corner of Fourth Street and Sixth Avenue.

In 1837, Hollis Chenery and John Phelps opened the

first store in Fulton. Before this, citizens did their trading at Galena, Ill., Albany, Ill., or Fort Armstrong, Ill., which is now Rock Island.

In 1838, the ferry between Fulton and the Lyons Post

Office opened. Fulton was a prime crossing to westward migration and for many years ferries ran between the Illinois and Iowa banks. The County Commissioners' Court issued a license in 1840 to run a ferry across the Mississippi River to Caleb Clark. Rates were considered high: a single fare cost 25 cents, a man and a horse cost 75 cents, two-wheel carriages cost \$1, and hogs and sheep cost 12.5 cents per head.

Also in 1838, the first post office was established in Fulton. John Baker was appointed as postmaster.

The mail was delivered three times a month by stagecoach from Peoria to Dixon.

FULTON, continued on 64

Clinton Public Library

"Over 100 Years of Service"

306 8th Avenue South 242-8441



Visit the Library
Root Cellar for local
history and genealogy
research needs or reserve
internet at 242-0840.

OPEN- Mon. thru Thurs. 9 to 9,
Fri. & Sat. 9 to 6, Closed Sunday.

Branch Library 105 Main Avenue
OPEN- Mon. and Wed. 1 to 9
and Fri. 9 to 6

clinton.lib.ia.us

FAMILY OWNED FOR OVER 50 YEARS!



Voted Best Bakery
7 Years In A Row!



**241 -245 MAIN AVENUE
LYONS CENTER • CLINTON**

FULTON

Story continued from 63

An ox team carried it to Sterling and it came to Fulton by horse and wagon.

In 1839, an acre of land in Fulton cost \$1.25 per acre, which figures out to be 23.5 cents per lot.

The first school in Fulton was built on Main Street in 1840. Instruction included general and advanced studies and tuition was charged.

In 1845, Langford and Hall Lumber Co. opened as the city's first water-powered sawmill. Lumbering was a big part of Fulton's past and huge log rafts were floated from northern forests to sawmills in the area.

In March 1854, the first issue of the Whiteside Investigator (later Fulton Journal) was published.

The subscription price was \$1.50 per year.

Its office building was located in what is now the 200 block of Ninth Avenue. That building was razed following the great flood of 1965.

On March 12, 1855, the voters of the settlement of Fulton City went to the polls and approved incorporating the town.

In 1855, the Dement House Hotel was built. The hotel was 96 by 110 feet in size and five stories high including the basement. The lavish hotel cost \$100,000 to construct and contained \$40,000 worth of furnishings. The walls were built of stone taken from Fulton quarries. It's opening was considered a gala event. Owner Charles Dement was later forced into bankruptcy.

At the start of the Civil War, the building was used as the Western Union College

and Military Academy, which opened in September 1861.

When the war ended, the academy was changed to the Illinois Soldiers' College.

By 1873, the college had been renamed the Northern Illinois College.

In 1902, the college became a military academy again until its end in 1911.

The building was razed in 1933. The site is now the

home of the Fulton Post Office.

In 1858, the grade school at the northeast corner of Ninth Street and Eleventh Avenue was completed.

On Feb. 14, 1859, the state legislature approved a special charter for the Town of Fulton City to become the city of Fulton.

Voters elected James McCoy as the first mayor.

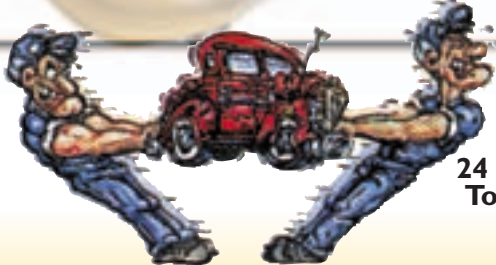
Grand Mound Communications
Offering high speed Internet in the Eastern Iowa Propane area.
This includes Clinton, Fulton, Camanche and Low Moor areas.

For more information give us a call at: **563.847.3000** or toll free at 1-888-732-1378

Grand Mound Communications
doing internet right since 2005

Does Your **Body Need Some Work?**

We Take Care of All Your Auto Body Needs:



24 Hour Towing

WE TAKE THE DENTS OUT OF ACCIDENTS

Classic Bodyworks, Inc.
213 17th Avenue North • Clinton, Iowa
243-2688
Jerry Lampe, Owner Serving • Clinton Area Since 1979



Gateway Travel & Cruise
343 4th Avenue South, Clinton, IA • Phone: 563-242-1025 or 800-747-1025
info@gatewaytc.com

Make fun a family tradition.



Open Mon. thru Fri. 8am-5pm; Sat. 9am-12pm
See us for all your Carnival Cruise needs!  **Carnival**
The Fun Ships.
Visit our website: www.gatewaytc.com
Ships' Registry: The Bahamas and Panama



de Immigrant windmill

One of Fulton's biggest attractions is a Dutch windmill, "De Immigrant."

This is the only authentic, Dutch working windmill in Illinois and one of very few in the United States. This authentic Dutch windmill was constructed on the flood control dike in the heart of Fulton. The windmill was

engineered and prefabricated in the Netherlands and shipped to the United States in containers by ship, rail and truck transportation. Dutch millwrights and masons traveled to the United States on three separate occasions and rebuilt the windmill. It is fully operational. Flour can be purchased at the windmill during its regular hours or you may visit the Fulton Meat Market year around.

Fulton added to Reagan Trail

The city of Fulton has officially been added to The Ronald Reagan Trail.

In 2005, local historian Nancy Kolk began researching Reagan family history and its connection to Fulton. From the research gathered, Heather Bennett, tourism

director, put together a tri-fold brochure titled, "Fulton's Ronald Reagan Connection." The brochure was very popular for visitors coming to Fulton and visiting the windmill. After several years of promoting Ronald Reagan's connection to Fulton, the Ronald Reagan Trail board agreed Fulton's

REAGAN, continued on 66

MISSISSIPPI VALLEY ATHLETIC TRAINING CENTER
"Where Olympic Dreams Begin"

Class Registration NOW ONGOING

Classes Available:

- Gymnastics & Tumbling
- Cheerleading
- Adult Fitness
- AND MORE!

243-3848

Carousel School of Dance

- Professional Instruction
- Ballet • Tap • Jazz

Preschool thru Advanced

233 5th Ave., South, Clinton, IA

563-242-1002

"We will take you from start to finish with any of your project needs."

Live Comfortably

GeoComfort® geothermal systems allow you to provide your family with a complete answer to all of your home's heating and cooling needs. GeoComfort systems not only enhance your physical comfort, but also give you peace of mind. GeoComfort geothermal systems do not rely on fossil fuels, which can harm the environment, and they offer unsurpassed comfort through better air purification, dehumidification and more consistent air temperatures. What's more, they also save you up to 70% off of your heating and cooling costs. Now that's living comfortably!

GeoComfort. Live comfortably™.

Over 70 Years Service

Domestic

PLUMBING COMPANY

563-242-0022

716 So. 2nd St.
Clinton, Iowa

The Builder's Choice

(A Fullerton Company)

A PRIVATELY OWNED FAMILY COMPANY

2001 Lincolnway, Clinton, Iowa

Phone: 563.242.0561 Fax: 563.242.6881

Next to Aldi's - Directly behind Premier Home Furnishing Park behind our building

TRAIL

Story continued from 65

connection to Reagan was historically significant.

Fulton's connection to the United States President runs deep. The Reagan family plot is located in the former Fulton Catholic cemetery. The President's parents were both born and married in Fulton at the church rectory of Immaculate Conception. In addition, the president's great-grandmother and paternal grandparents are all buried in the Reagan Family plot.

The Ronald Reagan Trail was officially designated by the Illinois General Assembly on May 21, 1999. The Ronald Reagan Trail consists of the following Illinois communities: Tampico (birthplace), Dixon (boyhood home), Ohio, Princeton, Henry, Chillicothe, Peoria Heights, Washington, Galesburg, Monmouth and Fulton. Each community pays an annual fee of 10 cents/per person based on the community's population. As part of the trail, Fulton will be added to all promotions including brochures and a Web site.



Windmill Cultural Center

Across the street from the "de Immigrant" Windmill, the new Windmill Cultural Center stands at the corner of 10th Avenue and First Street.

The center houses an extensive collection of European model windmills, ranging from three to six feet tall, as well as additional items and exhibits pertaining to multi-cultural heritages, including Dutch. The windmill collection was donated to the city by Henk and June Hielema, of DeMontte, Ind.

The Windmill Cultural Center is expected to open on April 24, from 10 a.m. to 2 p.m. and April 25, from 2 p.m. to 4 p.m. It will then be open weekends in May. Starting Memorial Day through mid-October, the center will be open daily.

**Dependable
Drain & Plumbing**

Trenchless Sewer Replacement

Precise Line Location

Color Sewer Camera

**212 34th Ave. N.
Clinton, IA 52732**

(563) 243 4953

309-654-2110
www.cordovadrag.com

- 12 miles south of Hwy 30 on Hwy 84 just north of Cordova, IL
- Weekly drag racing
- Full season of special events!!
- Free parking at all events
- Full concessions
- Family Playground
- Friday night fun racing open to anyone with a drivers license



Located just 2 blocks
from the
Clinton Riverview Park

Serving You For 36 Years



“HOME OF THE TACO PIZZA”



Pizza Delivery To:
Clinton, Camanche & Fulton
408 South 1st Street, Clinton
563-242-3121



Heritage Canyon

Take a trip back to the 1860s and connect with nature at Heritage Canyon.

Heritage Canyon, located on Fourth Street, was a limestone quarry from the mid-1800s until 1954. Rock was crushed for field fertilizer, levees, dams and road beds. This rock was then handed away in trucks and on trains and river barges.

From 1954 to 1967, the quarry sat abandoned because of damage to both sides of the river due to the dynamiting and became an eyesore to the community. In 1967, Harold and Thelma Wierenga bought the quarry with the plan to preserve Midwestern history without disturbing nature.

The couple worked on the canyon, building and assembling authentic looking buildings from the 1860s, trying to keep everything



authentic and focused on detail.

Three times a year, visitors can walk through the open buildings and watch as people depict life in the 1860s. Heritage Canyon and the Early American crafters par-

ticipate in Dutch Days, Fall Festival and Christmas Walk. During these events, admission is \$2 for adults and \$1 for children.

Heritage Canyon is open to the public from April 15 to Dec. 15 every year, depend-

ing on the weather. People can come into the canyon for self-guided tours from 9 a.m. to 5 p.m. Groups of 10 or more who would like a guided tour should call (815) 589-2616 at least two weeks in advance.

Eagle River Liquor

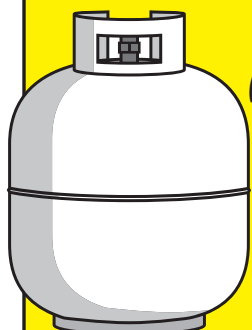
And Drive-Thru



Mon. through Sat. 8 am to 10 pm, Sun. 10 am to 8pm
Toll Free 877-865-9982 or 815-589-3006
1601 10th Avenue, Fulton, IL

NO DEPOSIT – ILLINOIS LOTTERY – NO DEPOSIT
COME CHECK OUT OUR PRICES!

We Fill LP Gas Tanks



Mon.-Sat. 8am - 6pm
 (after 6pm, please call first)
 Sunday 10am to Close
 (call first)

815-589-3006
 Toll-free **877-865-9982**



*We guarantee
 the best
 deals around!*

*honeymoons
 cruises
 family vacations
 weekend getaways*

In the travel business for over 9 years

Stacey Schroeder
 Owner/Consultant CTA/CTC



www.travelbystacey.com
 p: 563-357-6454 • f: 563-243-2598
sunsettravel2010@yahoo.com



Lock and Dam 13

Located at 4999 Lock Road, Fulton, Ill., the lock and dam is open year-round. Some areas at the lock and dam are restricted due to National Security concern.

The river is closed to navigation from November through February.

Thousands of visitors

come to view the barges and boats locking through on the widest pool in the Upper Mississippi River Basin.

This lock and dam, managed by the U.S. Army Corps of Engineers, is an excellent location to view bald eagles during the winter months.

Free tours of the lock and dam may be arranged by calling the park rangers.

Martin House Museum

The Fulton Historical Society is located in this Civil War Era home donated to the city by Mr. and Mrs. Leonard Martin. The museum houses several antiques, a genealogy research room and Fulton memorabilia. Open Sundays 2-4 p.m.

Contact: Fulton Chamber of Commerce: (815) 589-4545.

Call us and start packing!

Janet at 357-1805

Monica at 357-4554

we have...

What You're Looking For!

CLOVER HILLS

APPLIANCES • MATTRESSES • HOT TUBS

1601 N. 2nd St., Clinton, IA
563.242.5200

2400 N. Locust St., Sterling, IL
815.625.8529

The Complex

Beginning in January 2009, members of the Fulton community began collaborating to create a recreation and community center in Fulton. Through a joint effort, the concept for The Complex was formed.

The group's goal was to raise the \$3.25 million for the complete project by July 2010. The group hoped to have \$2 million raised by May 2010. In December 2009, they had received a little less than 10 percent of the needed funds in pledges and were in need of a "cash infusion."

Once completed, the center will contain a 200-meter, three-lane track. The center will offer a variety of spaces for physical activity. Several basketball courts, including both full and half courts, will be available. The smaller courts could be used for practice sessions and quick "pick-

up" games and the full courts could possibly be used to host weekend basketball tournaments. Volleyball courts, cardio and weight rooms, as well as rooms for aerobics classes, are also included in the plans. Complete restroom, locker room and shower facilities will be available.



Fulton's Dutch Days

The annual Dutch Days celebration is held the first weekend in May.

Fulton Dutch heritage is celebrated by wearing wooden shoes (klompen) and authentic costumes.

Klompen dancing, street scrubbing and a parade are part of the festivities.

The first permanent Dutch settler arrived at what was to become the city of Fulton in 1835.

Dutch Days activities include: Dutch dancing, Dutch meal, Dutch costumes, Dutch pastries, Dutch Treasures Room, Hindeloopen painting demonstrations and sales, bobbin lacemaking demonstrations and sales, children's pedal tractor pull, parade, windmill tours, Early American Crafters at Heritage Canyon, large arts and crafts fair and food vendors.

燕京

Yen Ching

1105 N. 2nd Street, Clinton
242-6422

*Serving Fine
Mandarin Cuisine*

Dine In or
Carry Out
We Accept

Bigger. Better.

Stronger. Together.

Come Try Out Our YMCA-YWCA Facilities Today!

- Fitness Center: State-of-the-art equipment & free weights
- Exercise Classes: Indoor Cycling, Step, Pilates, Yoga, Women Only Workout, Senior Circuit, Stability Ball & more!
- Lap and Open Swim times available
- Aquatic Classes, Aquacise, Joint Effort, Swim Lessons, etc.
- Swim Lessons for children free with Family/Single Parent membership
- Senior-Friendly Classes / SilverSneakers® Site

Drop-In Rates

Type	Adult	Senior HS College	Youth	Family
Day Pass	\$5	\$4	\$4	\$10
10-Punch Pass	\$30	\$25	\$25	\$60

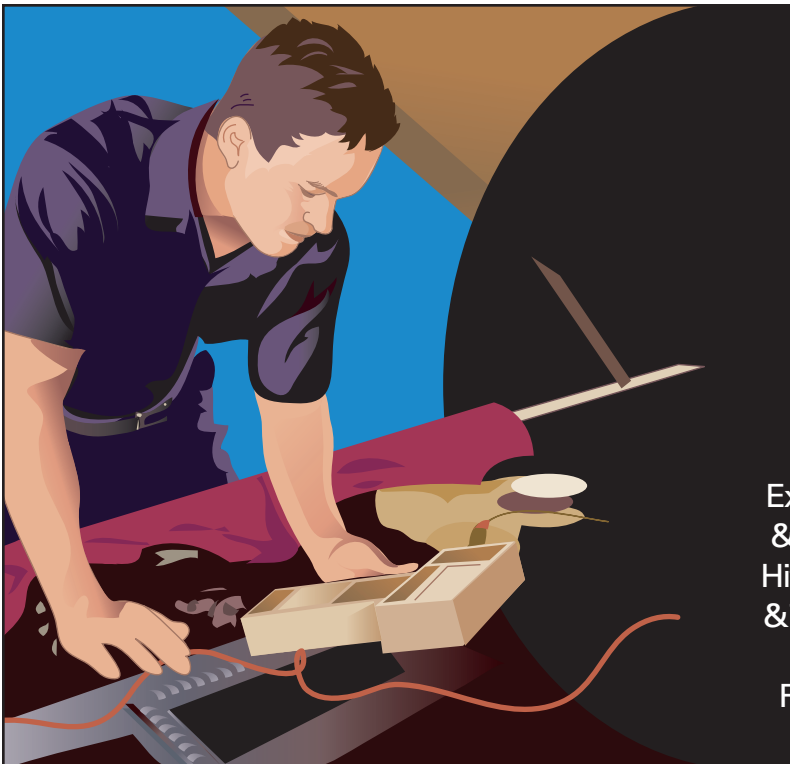
Free Babysitting
while using facilities
during prime times

**eliminating racism
empowering women** **ywca**

317 7th Ave. So.
Clinton, IA 52732
(563) 242-2110
www.ywca.org/clinton

YMCA
We build strong kids,
strong families, strong communities.

1401 12th Ave N
Clinton, IA 52732
(563) 243-1364



We Service
And Sell Snowplows
And Spreaders

Exhaust Systems • Brakes, Suspension & Steering • Air Conditioning Service • Hitches & Accessories • Engine Analysis & Tune-up • Cooling System • Lube, Oil & Filter • Transmission Service and Repair • Snow Plows Sales & Service

"Clinton's Complete Auto Repair Facility"

563-242-8708

Hours Mon-Fri 8am-5pm & Sat 8-Noon

**RIVER CITY
PIPE BENDERS**

141 7th Avenue South, Clinton, Iowa



- Trailer Sales & Rental
- Trailer Repair
- Trailer & Truck Accessories
- Hitches



TRAILER DEPOT
For All Your Towing Needs

M-F 8AM - 5PM
SAT. 8AM - NOON



CLOSED
SUNDAY



137 7th Ave. So., Clinton, Iowa • 563-242-1077

Welcome to Morrison

Morrison may have had foresighted founding fathers or they may have been just plain lucky.

Perhaps it was a combination of the two.

In the mid-1850s, the residents of Unionville expected the railroad to lay tracks right through their town. And the railroad barons had all the money in the world, or at least a good share of United States currency. So the people of Unionville demanded an unreasonable sum for right of way, according to the Morrison Historical Society.

The Galena and Chicago



MORRISON, continued on 73

Serving Breakfast, Lunch & Dinner

Krumpets

Bakery Cafe

Cookies • Pies • Bread and More!

Stop in today!

563.242.0935

1320 11th St. N.W., Clinton, IA
In Millcreek Mall

OPEN:
Monday thru Friday 6am-4pm
Saturday 8am - 2pm
Closed Sunday

Plus Authentic Italian Latte, Mocha, Coffee Drinks. Smoothies, Homemade Pastries. Everthing at Krumpets is fresh, homemade from scratch.

We are invested in Iowa.

At Iowa American Water, we are dedicated to providing high-quality water service to our customers. From laboratory technicians to meter readers, we are committed to meeting the needs of our neighbors and the communities we serve.

For more information 24 hours a day, seven days a week, call our customer service center at 1-866-641-2108 or visit www.iowaamwater.com.

MORRISON

Story continued from 72

Union Railroad didn't make money by caving in to unreasonable demands. They opted to bypass Unionville and go through Morrison instead.

Morrison was surveyed and platted in 1855 with the first train coming through on Oct. 19 of that year.

Morrison didn't seem too interested in incorporating as only 20 votes were cast, 17 in favor, two opposed and there was one blank ballot.

However, a week later on April 25, 1857, 44 men voted for city officials. The trustees were: Samuel H. Vroom, S. R. McCrea, Lyman Johnson, James G. Gridley and William L. Coe

(president.) Hiram Olmstead was elected Morrison's first police magistrate.

The money may have more to do with the struggle over the location of Whiteside County's seat than did the prestige involved. Both Sterling and Lyndon wanted it.

Six elections later and Lyndon was declared the winner in 1840. Sterling demanded a recount and this time it was named county seat. Then in September 1842, an order moved it back again. Another election, another move; Sterling was again declared the winner on April 3, 1849.

Finally, in 1857, the Illinois General Assembly ordered one more vote and Morrison was chosen as the seat of Whiteside County in government.



COSMIC BOWLING

FRIDAY AND SATURDAY NIGHTS
CALL FOR OPEN BOWLING TIMES

PLAZA BOWL **TRIPLE PLAY**
1119 N. 2nd St., Clinton 1601 9th Ave., Fulton
563-243-3032 815-589-3215



Welcome to the neighborhood.

Become a member,
we'll get you started!

Mention this ad at any branch location
and get \$5 to establish membership.

We are a full service financial institution. Membership is available to anyone living or working within Clinton and surrounding areas.



BETTENDORF • CLINTON • DAVENPORT
LECLAIRE • MOLINE • MUSCATINE
563-243-6320 • 800-426-5241 • www.ascentra.org



Listening, caring, doing what's right.

Rockwood Park

A trip to picturesque Morrison-Rockwood State Park offers many memorable experiences. A large sign in the shape of Illinois, fashioned from angle iron by a blacksmith, greets visitors at the entrance. Once inside, choose from a variety of recreational opportunities. Lake Carlton, a stream-fed reservoir, features an abundance of ducks and geese, and is considered a prime location for fishing. Or, plan a family outing at the Lakeview picnic area, or just do some bird watching among the hickory, ash, oak and walnut trees.

Morrison-Rockwood State Park is composed of 1,164 acres, located north of Morrison in Whiteside County. It was established in 1971 and officially opened for day-use only that same year. The park is named for the city

of Morrison and a combination of nearby Rock Creek and the heavily wooded park area — Rockwood.

While at the park, be sure to visit one of the picnic areas — all equipped with tables and outdoor stoves. Lakeview picnic area offers a beautiful view overlooking Lake Carlton. A pavilion with a fire-place adds to the rustic atmosphere here. Electricity is available for those wanting a more modern facility. This shelter, along with the shelter at Cedar Ridge, can be reserved for large groups or family reunions.

Ninety-two camping sites are available in heavily wooded areas of the park. Each site has electricity, grill and a table. A shower building with flush toilets is available from May 1 through Oct. 31. A trailer dump station is located near the campground.

Lake Carlton provides one

of the best fishing spots in Illinois. Its average depth is 12 foot, with a maximum depth of 27 foot. It has a shoreline of 2.9 miles with plenty of room for shore fishermen. Initial stocking of the lake was completed in 1970 and the lake has been managed since then to maintain a plentiful fishing variety. Anglers may catch largemouth bass, black crappie, rock bass, channel catfish, redear sunfish, bluegill, muskie and walleye. In addition to shoreline fishing, there are nine piers which are designated for fishermen.

The hunting area is comprised of timber woodlots, brushy draws, and fence line interspersed with open grasslands with corn, milo, and sunflower food patches. Topography consists of gently rolling hills and several gullies of which some contain permanent water.

A two-lane concrete boat

ramp allows easy access to Lake Carlton. Outboard motors are restricted to 10 HP and under and all boats with motors are to be operated under “no wake” speeds to protect the shoreline from wave erosion. An area is provided for private boat dockage for a small fee through concessionaire.

A 3-½-mile nature trail is marked for hikers. It offers many scenic views of the lake as it winds through the park. This trail is particularly beautiful in the spring when wildflowers are in bloom.

Equestrians may use a 14-mile trail through the park. The trail has a watering well and an overnight camping site with shelter.

For more information contact the Site Superintendent, Morrison-Rockwood State Park, 18750 Lake Road, Morrison, IL 61270, phone (815) 772-4708.

IMPERIAL LANES

& SPARETIME SPORTS BAR



COSMIC BOWLING

Friday Nights
Saturday Nights

Try Our
Friday Night
Prime Rib
Special

PIZZA NIGHTLY
We have
the NFL Sunday
Ticket!

563.259.1411

1823 S. Washington, Camanche



Hunting Enthusiasts:

We Carry These Top Brands...

- Benelli
- Franchi
- Remington
- Ruger
- Beretta

Archery Pro Shop • Bait • Tackle
Marine Products • Minnkota Repair Center
Indoor Archery Range • New and Used Guns



2014 No. 2nd St. • Clinton, Iowa
563-243-4696

WE'VE GOT A BRIGHT IDEA!

Trenkamp Electric has been providing the highest quality electrical service for over 30 years.



- Design Build
- New & Remodel Construction
- Agricultural Triplex Installation & Terminations
- Generators & Transfer Switches
- Parking Lot Pole Bases & Poles
- Bucket Truck & Trenching
- Communication Wiring-CAT5/ Coaxial
- Electric Heating
- Geothermal Heating & A.C.
- Grain Bin & Grain Leg Control Wiring & Automation
- 24 HR Service Calls
- Modern Day Central Vacuum New & Existing Construction Installation



TRENKAMP ELECTRIC



21 Country Road
Miles, IA 52064

563-682-7944

After Hours Cell
563-357-0344

Welcome to Camanche



In 1836, Dr. George Peck was prospecting along the banks of the Mississippi River when he came across a place he considered an ideal site "for a great city."

He platted 20 ranges of 20

blocks each, and then he walked to Chicago to offer the lots for sale.

Later that year, Martin Dunning, of the Chicago

CAMANCHE, continued on 77

AWESOME CARWASH



**FULL
DETAIL
CENTER**

Open Mon.-Fri. 9-5,
Sat. 9-1, Sun. 10-2

563.242.1620

2215 Manufacturing Drive,
Clinton, Iowa



Authorized U-Haul Dealer

Open 24 Hours • Well Lit • Mega Pressure • Foam Brushes
Soft Water • Heated Bays • Featuring a Truck & RV Bay

563.242.1620
2215 Manufacturing Drive, Clinton



CAMANCHE

Story continued from 77

firm of Dunning and Monroe, hauled a stock of general merchandise across the river to become the first businessman in Camanche.

Close on his heels came Charles Darrow in the same business, and in 1837 Peck's son, Franklin, put up an 18-by-20-foot log cabin on one of his father's lots and it became the first hotel in Clinton County.

The first owners of lots in Camanche (named after an Indian tribe, but misspelled) formed a pool to build a ferry to Albany, Ill. The ferry was described as "an old mud scow that took half a day to cross and come back."

Anna Eliza Thomas opened the first subscription school in the county in Camanche in 1838.

In January 1837, J.D. Bourne, who had built a log house near the present crossing of the Wapsipinicon River to McCausland, was commissioned a postmaster and his log cabin, which he called Monroe, became the first post office in the county.

A ferry to bring the mail across the Wapsi River consisted of a canoe in summer and Bourne's hunting dogs to cross the ice in the winter.

William D. Follett, of Sodus, N.Y., settled on the Wapsi River bottoms and knew the hillsides facing southeast would make good orchards and vineyards.

The next year he walked back to New York for young stock to plant on the slopes.

Herman B. Shaff found a large deposit of limestone and, on the prairie above it built his cabin — and a few years later a stone house and barn.

Clinton County was organ-

ized officially by the Legislature Jan. 11, 1840, and Camanche was made the county seat because more votes were polled there than anywhere else.

The first term of the United States Second District Court was held at Samuel Doolittle's hotel in Camanche beginning on Oct. 12, 1840. The first cases included Erastus Fairman, accused of burning a house; John Thomas vs. John Eldred for "\$5 lent and interest," and a divorce case.

In January 1841, the Legislature appointed three commissioners, from Cedar, Scott and Jackson counties, to find a new location for the county seat. The spot they choose was first named Vandenburg and later DeWitt.

The commissioners borrowed \$200 and sent it to the Dubuque land office in the care of the sheriff to register the new location.

Despite having lost its role as county seat, in 1852, Camanche was the chief town of Clinton County, having reached prosperity as various railroad and bridge schemes were attempted.

That enthusiasm worked to create a rapid growth in population, business, industry and construction. Grain and pork were bought in large quantity for shipment on the river. There were lumber mills, farm implement dealers and a steady commercial fishing industry.

Then, on Sunday, June 3, 1860, all of the growth and activity came to a sudden stop. Without warning, two fierce tornados united southwest of DeWitt and bore down on Camanche. In two or three minutes, the tornado killed 29 people and left 76 seriously injured and 38 missing (32 bodies were later found).



The Insurance Group



Mark W. Mangler, LUTCF
Diane Christensen • Mike Determan

563/242-4000

800/893-5404

FAX 563/242-6973



Millcreek Parkway & North 18th Street
Clinton, Iowa

Farm, Commercial & Residential Buildings

WE SERVICE WHAT WE SELL!

Ross River, Cell 563-559-0151

Dave River, Cell 563-559-0152



Wick

3252-213th Avenue • Maquoketa, Iowa

Clinton 563-242-8864

DeWitt 563-659-5557

Maquoketa 563-652-2647

800-656-7677

Fax 563-652-2275

email rriver@willinet.net

Camanche Days

Camanche Days is held the weekend of the first full week in August. This annual celebration features complete family entertainment including a car show, golf tournament and softball and tennis tournaments. The event will also have a pedal pull, Kid's Day Out, Toddler Tracks, a bag board toss tournament, a karaoke contest, bingo, Camanche Classic, catfish tournament, Sunday evening fireworks, and the parade sponsored by the Camanche Kiwanis. A Little Prince and Princess, Prince and Princess and Miss Teen Contest are held. There are also many local food vendors, live entertainment, and the beer tent.

Contact: Linda Cundiff at (563) 259-1209 or e-mail: ulcer@hotmail.com.



Camanche Depot Museum

102 12th Ave., Camanche.
Climb aboard this fully-restored 1951 Milwaukee/Soo Line caboose and railroad depot and step back in time to 1899 when the depot was built. The Depot is open by appointment. Contact: (563) 259-1285, (563) 259-1280 or (563) 259-1175.

Schultz
Funeral Homes

Contact Us For Pre-Arrangements

722 8th Street DeWitt, Iowa 52742-1630 Phone (563) 659-5241	611 Fulton Street Grand Mound, Iowa 52751 Phone (563) 847-3271
---	--

www.schultzfuneralhomes.com

TEGELER
MUSIC

*Ask About
Our 6 Month
0% Financing*

**Musical
Instrument**
Sales
Service
Rentals
Lessons

Ph. (563) 242-1234
Toll Free (877) 877-3997
101 S. 2nd Street in Clinton
www.tegelermusic.com

Free Delivery & Set-Up!!!

PREMIER
HOME FURNISHINGS

10,000 Sq Ft Showroom ~ We've Got It All

Ashley Furniture • Whirlpool Appliances
Toshiba & LG TVs • Dell Computers
Omaha & Therapedic Mattresses (10 Year Warranty)

2001 Lincoln Way • Clinton, Iowa • (563) 243-0332
www.premierfurnishings.us



SALES • SERVICE • REPAIR • 24-HOUR EMERGENCY REPAIR

RHA
SERVICE INC.

Quality Sales & Service Since 1977

524 3rd Ave. South
Clinton, Iowa
563.242.4563



Blue Heron Eco-Cruises

The Clinton County Conservation Board offers Blue Heron Eco-Cruises, based at Rock Creek Marina and Campground located just south of Camanche on U.S. 67.

The Blue Heron offers both public and private cruises weekly on Thursday nights

from 7 to 9 p.m. May through October. Private cruises are booked separately. The boats serve tourists, outdoor groups and schools by providing naturalist-led eco-cruises on the Mississippi River. Cruises to Lock and Dam 13 from the boat ramp in Clinton are available on Monday evenings.

The cruises last approximately 1½ hours.

Camanche Historical Museum

1307 S. Washington Blvd.

This museum houses collections from Camanche's past, including a veteran's list of past and present military personnel. A brick walkway surrounds the flagpole in honor of Camanche citizens. The Clinton County/Gateway Genealogical Library is also available. Visit the museum to learn how to research your family history. Collections include cemetery records, county histories, funeral home records, old age assistance, tax records and several family histories. The museum is open by appointment.

Contact: (563) 259-1285, (563) 259-1280 or (563) 259-1175.

Clinton's Woman's Club Presents The George Curtis Mansion 420 5th Avenue South

Open for Tours 1:30 - 3:30pm on
Wednesdays from Memorial Day to Labor Day
Other times by Appointment.



Public Luncheon in
April 16 • 11am-1pm

Breakfast on the Porch
in June 13 8am-1pm

Checking Fares?

search **MLI** qairport.com

Proudly serving travelers from the Clinton area.



Easier.

Call your local travel agent or the airline for airfares & schedules.

Timber Lake Playhouse

Timber Lake Playhouse, near Mount Carroll, Ill., came into existence in 1961 as a not-for-profit summer stock theatre, dedicated to providing a center of cultural opportunity for developing artists and a showcase of quality life theatre entertainment to the residents of the Midwest, particularly those within northwestern Illinois and eastern Iowa. TLP is the oldest continuous operating summer theater in Illinois.

Tickets can be purchased by calling the TLP box office at (815) 244-2035 daily from 11 a.m. to 7 p.m.

The 2010 TLP Season

- Chicago — June 3, 4, 5, 6, 9, 10, 11, 12 and 13
- Steel Magnolias — June 17, 18, 19, 20, 22, 23, 24, 25, and 26



- Oklahoma! — July 1, 2, 3, 4, 6, 7, 8, 9, 10, and 11
- Love, Sex & The I.R.S. — July 15, 16, 17, 18, 20,

- 21, 22, 23, and 24
- Curtains — July 29, 30, 31, Aug. 1, 3, 4, 5, 6, 7 and 8

- The 25th Annual Putnam County Spelling Bee — Aug. 12, 13, 14, 15, 17, 18, 19, 20, 21 and 22

COME TO THE COUNTRY!

RIDE THE BULL
3 Rides - \$5

MADE FROM SCRATCH COOKIN'

DAILY LUNCH & DINNER SPECIALS

LIVE COUNTRY MUSIC EVERY WEEKEND

Private Rooms Available for Parties!

The RODEO SALOON & FEEDHOUSE

1801 Lincolnway, Clinton
242-3112

...WE' ALL COUNTRY!

Present ad to receive
\$8 OFF*
the rate of the day.

* Valid only at the Clinton, IA Super 8 (083402). Based upon availability. Not valid with other offers or discounts. Offer expires 12/31/2011.

Complimentary SuperStart® Breakfast • Cable TV with **HBO** MicroFridge® and Hair Dryer in All Rooms • 24 Hr. Coffee Service
Free High Speed Wireless Internet • Pets Welcome w/fee
Large Vehicle Parking • Children 17 and Under Stay Free

Clinton Super 8
1771 Lincolnway • Clinton, IA 52732 • (563) 242-8870

Destination Super®

WWW.SUPER8.COM | 1.800.800.8000 | **WORLDWIDE REWARDS**
En Español 1.877.202.8812

© SUPER8 INTERNATIONAL INC.

All Super 8 hotels are individually owned and operated.

TURNER APPLIANCE

317 N. 2nd St. Clinton IA 52732
(563) 242 6411

**Providing All Your GE and Hotpoint
Home Appliance Needs**



**WE
SERVICE
ALL
MAJOR
BRANDS**

Celebrating 76 Years Serving The Gateway Area

Welcome to DeWitt

DeWitt is a progressive, friendly community, known as the "Crossroads to Opportunity". The second largest community in Clinton County, DeWitt is a great place to live, work and play.

DeWitt is a community with great amenities, including a state-of-the-art hospital with attached nursing home and physicians to fit every need. Quality of life is a strong point in DeWitt. Main Street is host to the historical museum, financial institutions and many locally owned business providing everything from prescriptions to gift baskets to clothing and, of course, many specialty shops. Customer-oriented merchants are

always eager to offer friendly, courteous service. Just about anything you can think of can be found in DeWitt.

The DeWitt Park and Recreation operates the high-quality Aquatic Center featuring a zero-depth wading pool, two slides and a drop slide. The DeWitt Fitness Center is equipped with an indoor pool, weight equipment, a jogging track and several racquetball courts. A variety of adult and youth classes are offered at the Fitness Center. Several parks adorn the community including Lincoln Park, Paarmann Park and Westbrook Park, with an

extensive walking/biking trail.

DeWitt offers a large variety of restaurants and hotels for visitors. Entertainment options in DeWitt include year-round family sports, an

18-hole golf course, bowling lanes, theater, swimming and tennis courts. For more information, contact the DeWitt Chamber of Commerce at 563-659-8500 or info@dewitt.org.



Nutrition Plus

health flows from good nutrition

- Knowledgeable Staff
- Highest Quality
- Lowest Prices

Special Orders & Delivery Available

STORE HOURS:

Monday 9-6; Tuesday-Friday 9-5; Saturday 9-4

Ron & Carey Everson

137 5th Ave. So., Clinton, IA. 52732

netplus.net

563-242-1347

Here's our idea of economic stimulus:

Get discounts up to 40%

If your economy needs some immediate stimulation, we can show you how to start making your car insurance dollars work a lot harder right away. Like a good neighbor, State Farm is there.®

CALL AN AGENT FOR A QUOTE.



Jeff Reed

826 S. 4th Street
Clinton, IA 52732
Bus: 563-243-1060

www.jeffreedinsurance.com



Ron Neblung

1300 S 14th Street
Clinton, IA 52732
Bus: 563-242-3400

www.neblung.com

 **State Farm**

statefarm.com



Espresso, Cigars & More

Espresso • Cuban Seed Cigars • Lotto Scratch Tickets
Guayabera Clothing (Men's, Women's & Childrens) • Specialty Foods

Cuban Cuisine Café NOW OPEN! CHECK US OUT TODAY!

COUPON

**BUY 4 CIGARS,
GET ONE FREE!**

of equal or lesser value

Buy One Sandwich
at Regular Menu Price, get
the 2nd One 1/2 Off

563-242-0197
2007 N. 2nd St., Clinton, IA 52737
Expires March 2010

-CUBAN CUISINE MENU-

Sandwiches

- Sandwich Cubano... ham, pork, swiss, mayo, mustard, pickles (Cuban Sandwich)
- Sandwich de Cerdo (Pork Sandwich)
- Sandwich de Croqueta (Croquette Sandwich)
- Sandwich de Media Noche... ham, pork, swiss, mustard on sweet roll (Midnight Sandwich)
- Tostada (Cuban bread with butter)



Entremeses/Appetizers

- Croquetas
- Tamales Cutamos

Milk & Coffee

- Regular Coffee
- Espresso



Pastres/Desserts

- Guava with Cream Cheese
- Coconut Squares
- Spanish Rice Pudding
- Flan
- Churro's

Juices

- Jupina
- Materva
- Tropical Juices

Soup & Salads

- Sopa de Pollo (Chicken Soup)
- Frijoles Rojo (Red Bean)
- Frijoles Negro (Black Bean)
- Avocado & Onion Salad
- Lettuce & Tomato Salad



563-242-0197
2007 N. 2nd St., Clinton, IA 52737
Hours: 7am to 10pm
High Speed Internet Access Available

International Calling Cards • In-Store Gift Cards • Visa Gift Cards

AA ACCOUNTING & TAX SERVICES, INC.



- Accounting
- Tax Services
- Fast Refunds Available
- Individual & Business
- Immigration Paperwork
- Notary Service
- Free Consultation

563-242-0197

2007 N. 2nd St., Clinton, IA 52732 • Hours: 9am to 6pm



Clinton County Fair

Hundreds of 4-H and FFA members are preparing exhibits for the annual Clinton County Fair and Club Show, which will run in DeWitt from July 14 to July 18.

Youth exhibitors will be showing their livestock and other projects. This event features club show Olympics, a teen dance, a carnival, rodeo and demolition derby.

Many ways exist for a person to enjoy and participate in the

fair. Adults from Clinton County may enter projects in the creative arts. People can choose between the Master Gardener's vegetable show or the flower show. Children will enjoy entertainment and a petting zoo. Adults will be able to watch or participate in the Monster Arm Wrestling contest. Other events and entertainment will be available as well. Anyone wanting to help the Clinton County Fair may become a sponsor. For any questions, call the fair board office at (563) 659-1624.



Clinton's Premier Theatre



- Full Service Snack Bar • Stadium Seating
- Digital sound system and state-of-the-art projection
- Comfortable high back seats with cup holders

2340 Valley West Court (Behind Kohl's and Wal-Mart)

CALL THE THEATRE HOTLINE AT 242-8831 FOR LISTINGS AND SHOW TIMES

or check out our web page at cectheatres.com

Local churches

- Seventh Day Adventist Church, 532 Eighth Ave. South, Clinton, 242-1272
- Bethel AME, 303 S. Third St., Clinton, 243-3431
- Assembly of God, 601 10th Ave., Fulton, Ill., (815) 589-2939
- New Life Assembly of God Church, 2215 12th Ave. South, Clinton, 242-2332
- Calvary Baptist Church, 1619 Second Ave. South, C l i n t o n , 243-2350
- Eagle Heights Baptist Church, 1026 Third, Fulton, (815) 589-3443
- First Baptist Church, 1000 Third, Camanche, 259-1130
- First Baptist Church, 2020 N. Third St., Clinton, 242-0811
- Gateway Baptist Church, 722 S. 16th St., Clinton, 242-7887

- Second Baptist Church, 438 Fourth Ave. North, C l i n t o n , 243-6646
- Greater True Love Baptist Church, 955 S. 18th St., Clinton, 243-1937
- Canaan Bible Missionary, 2121 Iowa Ave., Clinton, 243-3932
- Church of the Visitation, 1032 Middle Rd. Camanche, 259-1188
- Immaculate Conception, Fulton/St. Patrick, Albany, Ill., (815) 589-3542
- Prince of Peace, 1105 LaMetta Wynn Drive, Clinton, 242-3311
- Clinton Church of Christ, 210 N. 13th St., Clinton, 242-1806
- First Church of Christian Science, 562 Fifth Ave. South, Clinton, 243-1209
- C o m m u n i t y Congregational Church,

CHURCHES, continued on 86



CLINTON FLORAL
 1912 Manufacturing Drive, Clinton, Iowa
 563.242.2651

Serving Clinton & Surrounding Area Since 1947

ALL RESIDENTS ENJOY PRIVATE ROOMS!!! at
BIG MEADOWS
 Husband & Wife Suites
 Hospice Rooms with Connecting Room for Family Needs!
 Extended Meal Times with Real Choices
 In A Spacious Dining Room!

BIG MEADOWS NURSING HOME

CHURCHES

Story continued from 85

2300 Pershing Blvd., Clinton, 243-4454

- First Congregational Church, 700 N. Bluff Blvd., Clinton, 243-1299

- Christ Episcopal Church, Grace Office, 2100 N. Second St., Clinton, 242-5740

- Christ Episcopal Church, St. John's Office, 238 Fourth Ave. South, Clinton, 243-1648

- Evangelical Free Church, 1010 13th Ave. North, Clinton, 243-4164

- Gateway Faith Fellowship, 701 11th Ave., Fulton, (815) 589-4283

- Church of the Open Door, 816 13th Ave. North, Clinton, 242-0968

- Kingdom Hall S. 944 Lincoln Blvd., Clinton, 242-

3361
 • Chancy Lutheran, 2315 Wallace St., Clinton, 242-4096

- Immanuel Lutheran, 1519 S. Washington Blvd., Camanche, 259-8249

- Immanuel Lutheran, 819 S. Fifth St., Clinton, 242-4229

- St. John Lutheran, 416 Main Ave., Clinton, 242-5588

- St. Paul Lutheran, 715 S. Third St., Clinton, 242-4102

- Trinity Lutheran, 656 Fifth Ave. South, Clinton, 242-5328

- Zion Lutheran, 439 Third Ave. South, Clinton, 242-7391

- First United Methodist Church, 621 S. Third St., Clinton, 242-5868

- Living Faith United Methodist Parish, Clinton, 242-1439

- St. Mark's United

Methodist Church, 808 Third, Camanche, 259-1064

- Trinity United Methodist Church, 1605 13th Ave. North, Clinton, 243-4030

- Church of Jesus Christ Latter-day Saints, 1825 16th St. NW, Clinton, 243-7419

- First Church of the Nazarene, 2416 Stockwell Lane, Clinton, 242-3670

- Life Tabernacle, 311 S. 3rd St., Clinton, 242-0046

- Christian Community Fellowship, 1825 Iowa Ave., Clinton, 243-5561

- First United Presbyterian, 400 Fifth Ave. South, Clinton 242-1142

- Fulton Presbyterian Church, 311 N. Ninth St., Fulton, (815) 589-3580

- Bethel Christian

CHURCHES, continued on 88

Hometown Kitchen & Bath
The Fireplace Shop. Etc.



“The Area’s Design Specialists”

KITCHEN — FIREPLACE — TILE

248 Main Avenue ■ Clinton, Iowa ■ 563-242-3232

www.kitchens-fireplaces.com

THE CHURCH THAT LOVE BUILT

816 13th Avenue North, Clinton, Iowa 52732 • 563-242-0968

Email: opendoor816@gmail.com • www.theopendoorchurch.org



CHURCH OF THE OPEN DOOR CAMPUS

The Church of the Open Door exists to be a house of healing to the Gateway area. Here you can find love, acceptance, forgiveness and encouragement. We invite you to come and worship with us.

Worship & Sunday School
 8:30 & 10:30 a.m.

Evening Worship 6:00 p.m.

Radio Broadcast:

KROS 1340 AM...8:45 a.m.

KLNT 1390 AM...7:00 a.m.

T.V. Broadcast:

KGCW 26

(Mediacom 13)...7:00 a.m.

Wednesday at 6:30 p.m.

Covenant Keepers
 (Grades K-6)

U-Turn Youth Ministries
 (Jr. & Sr. High)

U-TURN MINISTRIES

Meets
Wednesdays
 at 6:30 p.m.



U-TURN CAMPUS

512 N. 18th St., Clinton

Please call the church for more information.



You'll love every piece of this Country.



C

Let us spoil you with fresh cookies and complimentary breakfast as well as high-speed Internet access and a team who will welcome you like family. And we'll make you feel right at home with a special rate and other fun surprises available for a limited time. Visit countryinns.com and see why we'll have you saying, "I love this Country."

Read It & Return Lending Library™ • Fitness center
Business center • Gold Points®



I love this Country.™

2224 Lincolnway • Clinton, IA 52732
800-458-4000 • 563-244-9922
countryinns.com/clintonia

CHURCHES

Story continued from 86

Reformed, 1208 Third Ave.,
Fulton, (815) 589-2501

- Community Reformed,
747 N. 12th St., Clinton,
243-5383

- First Christian

Reformed, 801 15th Ave.,
Fulton, (815) 589-3790

- Second Reformed, 703
14th Ave., Fulton, (815)
589-3425

- Spring Valley Reformed,
Fulton, (815) 772-3554

- Trinity Reformed, 514
13th Ave., Fulton, (815)
589-2725

- Clinton Citadel, 219 1st

Ave., Clinton, 243-4502

- Unitarian Universalist
Fellowship, 309 30th Ave.
North, Clinton, 242-4972

- Community of Christ,
2409 13th Ave. North, 243-
4853

- Victory Center Rescue
Mission, 505 Ninth Ave.
South, 242-9016

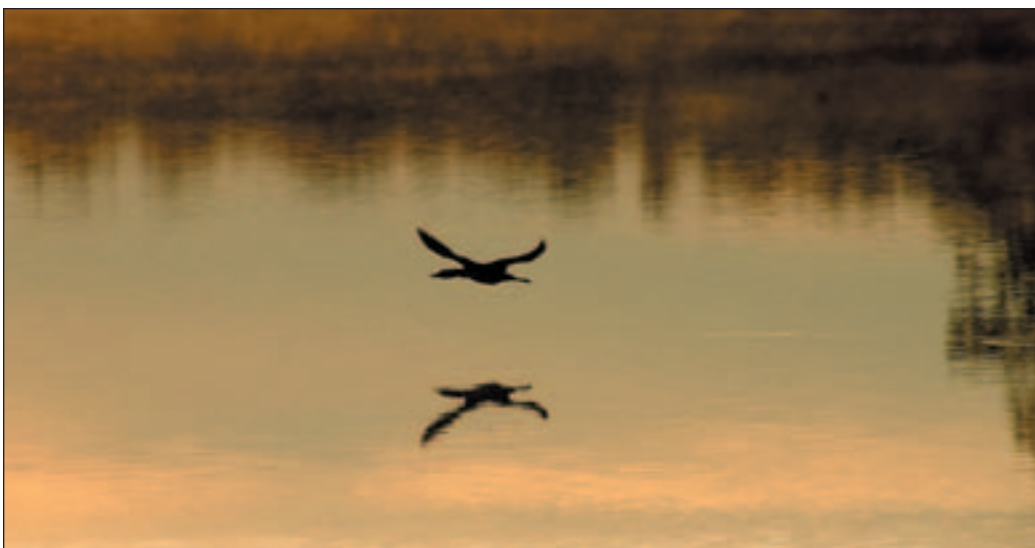
- Apostolic Temple of

Victory, 413 Fourth Ave.
North, 242-3498

- First Spiritualist Church,
92 28th Ave. North, 243-
3233

- Mississippi Valley
Spiritualist, 71 Mt. Pleasant
Park, 242-0116

- Clinton Islamic Center,
1500 Second Ave. South,
243-5699



Gateway area Campgrounds

Rock Creek Marina and Campground

Rock Creek is a winter recreationist's dream. Situated on the banks of the Mississippi, people can snowmobile, ice fish, cross country ski, hunt, ice skate, snowshoe and bird watch. The 100-acre park is in the heart of the Upper Mississippi National

GATEWAY, continued on 90

Deb Wiese's Bookkeeping & Tax Service

We pride ourselves on friendly service and quality work at a fair price!

- Personal & Business
Income Tax Preparation
- Monthly & Quarterly
Bookkeeping
- Electronic Filing
- Payroll Services

www.debwiesetax.com



514 S. 2nd St., Clinton, IA 52732 • 563-242-6976
1021 11th Street, DeWitt, IA 52742 • 563-659-9508



In their words...

A Picture of Health

Andy Moore

Cardiac Catheterization/Rehab Patient
...and a CGH board member since 1989

Cardiac cath team provides heartwarming care.



After Sterling Steel executive Andy Moore underwent a stress test, he was sent to the CGH Cardiac Catheterization Lab for further diagnostics. Andy wasn't anticipating any problems, but then reality set in when serious blockages were detected. "I was just *shocked*," he recalls. However, the cardiac cath team helped Andy feel at ease. "They were very caring and excellent at communicating what was going on. They made sure I didn't have any questions that were left unanswered," he says. "It made a very disturbing situation much more manageable." Andy had six stents inserted to correct the blockages, then returned to CGH for cardiac rehabilitation. "The rehab employees are great... and really help you go from 'I'm not sure I'll be able to do anything anymore' to regaining confidence and getting the strength and stamina you need to continue an active lifestyle."

"CGH stays true with the mission of providing high-quality and affordable health care... it's an organization you can be proud to be a part of."



GATEWAY

Story continued from 88

Wildlife Refuge that includes 8,000 acres of public land and water in Clinton County.

The Wood Duck cabin is a thing of beauty. The square log structure features a loft and a front porch. Inside, there is a kitchenette, modern restroom, kitchen table and sleeping up to eight. It even has a heater for winter and air conditioner for the summer. Cabin rents for \$40 per night; \$50 deposit per stay.

There are eight small cabins that include electricity, lights, four single beds with mattresses, picnic table and fire ring.

The cabins are 12-by-14 feet in size and provide a sturdy place to sleep in any season. Guests must provide their own heat source in the cabin such as an electric or kerosene heater. Cost is \$20 per night with AC or \$15 per night without AC. There is a \$20 deposit per day. Contact the Rock and Creek store at (563) 259-1876 for more information.

Eden Valley Refuge

Eden Valley Refuge is 200 acres of high limestone bluffs, clear running streams, mature woodlands and well-maintained hiking trails. The swinging bridge and observation tower are popular park attractions.

The bunkhouse is perched between the bluffs and scenic Bear Creek. Guests will enjoy complete solitude because the bunkhouse is located one-eighth mile from the nearest road and is accessible only by foot. While this means packing in all your gear, it also makes for a peace and quiet that is very

rare today.

The recently remodeled bunkhouse has nine padded bunks inside along with a small electric stove, refrigerator, lights, picnic table, a wood burner for heat and a wonderful deck. The bunkhouse will sleep up to 12 people. Cost is \$35 per 24 hours, youth groups are charged \$3 per person up to \$35 maximum. \$50 deposit/stay.

Contact the CCCB office at (563) 847-7202 for information and reservations.

Kestrel Cabin

Kestrel Cabin is a modern cabin. The cabin is nestled in the heart of the beautiful forests of the Wapsi River Center. The center has 5 miles of hiking trails winding through prairie, upland and flood plain forests. Overnight guests also have the choice of scheduling their stay with one of the many public events that take place at the center. The Eagle View Eco Center is open Saturdays from 1 to 5 p.m.

Owl's Nest Dormitory

Owl's Nest Dormitory is the newest and now the largest rental that the Wapsi River Center provides. Owl Nest Dormitory provides sleeping areas with bunks, modern restrooms and shower facilities.

This is great for large groups, such as schools, churches, scouts, and any organized youth groups.

Elk River Lodge

Camp Miss-Elk-Ton

This facility is for organized youth groups only such as scouts, 4-H, and church youths.

The Wapsi Center also provides meeting rooms in Redtail Lodge or the Assembly Room in the Eco Center. Either is \$50 per day plus \$15 extra for kitchen facility use.



Hillside Stables Restaurant & Inn

1412 N. Hwy. 67 • Sabula, IA • (563) 687-2479

*Enjoy German
& American
cuisine in a
friendly
old-world
atmosphere!*



Hillside Stables Restaurant

Our menu offers a large selection of hand-cut char-broiled steaks, fish and seafood/deep-fried or grilled with our own house marinade, a variety of "schnitzels", juicy marinated grilled pork steaks, zesty German sausages, our signature chicken and duck and much more!

Our banquet room seats 40+ and offers the perfect setting for receptions, parties and meetings.

Hours: Tuesday-Thursday 4:30pm-8:30pm
Friday-Saturday 4:30pm-9pm
Sunday 11am-8pm, Monday Closed

*An affordable
alternative to
motels -
clean, quiet and
comfortable!*



The Inn

Hillside Inn offers two tastefully decorated and fully furnished 2 bedroom apartments.

If you're having friends or family coming to visit or just need a getaway, The Inn would provide you with the ideal place for relaxation in a beautiful rural setting.

www.hillside-stables-ia.com



Come visit Harbor Crest Home anytime.
Talk to our caring staff, enjoy a meal
and see for yourself...

There is a difference

at Harbor Crest Home!



- Intermediate Nursing Care
- Private & Semi-Private Rooms
- Respite Care
- Exceptional Meals
- A Dedicated and Highly Trained Staff to Provide Superior Nursing Care



817 17TH STREET • FULTON, IL 61252
815.589.3411

Savanna Park District

The Savanna Park District offers recreational opportunities at five parks, an indoor swimming pool and the Savanna Marina, 1 Main St., Savanna, Ill.

The Savanna Swimming Pool is attached to the West Carroll High School at 500B Cragmoor. The indoor pool consists of a 42-by-75 foot size pool and a wading pool. People can enjoy looking at the port-hole wall murals inside. Locker rooms were renovated in 2004 to allow more people to use this accessible facility. The pool offers times for open swim, lap swim and parties. Personnel offer both group and private lessons. There are classes in water exercise.

These parks are a part of the district:

- Old Mill Park
- Marquette Park
- Helle Park
- Monument Park
- Sixth Street Park

Contact: The Savanna Park District Office at (815) 273-2955.



Melon Days

Thomson, Ill. invites people to join in the fun and have a free slice of watermelon during the town's annual Melon Days held on Labor Day weekend.

This family-oriented event is held throughout Thomson and offers a variety of activities.

Those interested in athletics can join in through softball, mud volleyball, horseshoes or the festival's annual memorial walk/run.

The Melon Days Parade, a variety of food, children's events and musical entertainment, will all be available to those attending Melon Days.

Contact the Village of Thomson at (815) 259-3905 for more information

Timber Lake Playhouse

Your Summer Escape

2010

CHICAGO
June 3-13

STEEL MAGNOLIAS
June 17-26

OKLAHOMA!
July 1-11

LOVE, SEX and the IRS
July 15-24

CURTAINS
July 29-Aug 8

The 25th Annual Putnam County SPELLING BEE
Aug 12-22

Tickets ON SALE:
May 25th

Adult Tickets ONLY \$20!!!

8215 Black Oak RD
Mount Carroll, IL

Box Office:
815-244-2035

www.timberlakeplayhouse.org



Army Depot, Military Museum

Located seven miles north of Savanna, Ill., on Illinois 84 in the Savanna Depot Park, the Savanna Army Depot and Military Museum celebrates the civilian and military partnership that keeps America safe.

The Savanna Army Depot Museum has a variety of items. Pictures, newspapers and various displays fill the room.

On May 15 and 16, the

museum will host a World War II reenactment including static displays of many military vehicles. There will be the Savanna Festival of Wheels on the July 17 and 18 featuring military vehicles, post 1940s cars and a craft show. Visitors on Aug. 28 and 29 will enjoy the second annual Civil War Reenactment.

Admission is free but visitors are asked for a donation. Hours are 9 a.m. to 3 p.m. Monday through Wednesday and between 10 a.m. and 4 p.m. Thursday through Sunday.



Live the Life
you've
imagined
www.aheinc.biz

AFFORDABLE, Independent, Senior Housing In A Home-Like Atmosphere

"For Quality Care & Services, Go STRAIGHT To the Top"

**24-hour Emergency Response
Laundry & Housekeeping Services
Nutritional Meals
Personal Care Assistance
Transportation Services
Active Social Calendar**

Private Pay - Illinois Medicaid Accepted

Low Income Seniors Can Now Qualify
For Complete Services In Our
State Approved Supportive Living Facility

Why settle for *almost* what you want, when you can have *exactly* what you want?

Have you been looking at house after house, never finding all that you want? Have you found that most of these houses will soon need new roofs, furnaces, flooring, fixtures, kitchen upgrades, bath upgrades, and so on?

Then it's time to come to Bi-State American Homes, Inc., where we'll design a home to your exact specifications, with no need to update or repair anything!



Bi-State American Homes, Inc.

WHERE ALL YOU'LL NEED TO 'FIX' IS DINNER!

424 N. 2nd St., Clinton, IA
Call 563-321-4441 or 563-559-0311

visit us on the web at
www.bistateamericanhomes.com



*Pinnacle
Place*

1125 N. 5th St. • Savanna, IL • 815-273-2105 • aheinc.biz/pinnacleplace



Savanna, Ill., Depot Business, Industry and Technology Park

The Savanna Depot Business, Industry and Technology Park is approximately 3,000 acres of the former 13,062-acre Savanna Army Depot in rural Carroll and Jo Daviess counties, about seven miles north of Savanna on Illinois 84.

The Savanna Depot Park is designated for use for economic development. Bicyclists and motorists may travel Army Depot Road (west) off Illinois 84 to a historical marker that describes the depot's history 1918-2000 as a proving grounds, ordnance depot and munitions making, storage and demolition site.

Savanna, Ill., Historical Society

Now under construction is a new museum that will house a collection of more than 90 life-sized mannequins dressed in historically accurate Civil War uniforms, a one-of-a-kind collection in a 5,000-square-foot display on the third floor of a historic building in downtown Savanna. Each soldier has his or her own personal story to tell. The

Gene Wright Gallery of Civil War Soldiers is the only exhibit of its kind, and the history of each character brings the Civil War to life.

Also, an interactive 1,000-square-foot HO scale model railroad replicating the Savanna area in the 1950s is being developed on the second floor. Railroad buffs will enjoy watching the action as the trains run, engines switch at the roundhouse and seeing the communications towers relaying information



It's all in our name...



We are all about community.

*committed
to our
community*

- Internet Banking
- Auto Bill Pay
- Checking
- Savings
- CD
- 24 Hour ATM Banking

**Community
State Bank**

1325 17th Street, Fulton, IL
 Phone: 815-589-9090 • Fax: 815-589-5225
 Toll Free: 887-801-8877 • commstbk.com

Visit Our Other Convenient Locations:
 Morrison • Rock Falls • Sterling • Dixon



PRAIRIE HILLS SENIOR LIVING



PRAIRIE HILLS
Assisted Living Community

Prairie Hills has it all, wonderful apartments, expansive living areas, game rooms, restaurant style dining, and help from great people if needed.

Come and see our recent expansion. You'll especially enjoy the newly created outdoor courtyard paths and garden areas.



When you choose to make Prairie Hills your home, you've chosen a place where friendliness, compassion, and happiness are more than just words – they're a way of life.

**Call Jean Greeley, our Administrator and Marketing Director,
or Ann Schneck our Senior Living Counselor**

@ (563) 243-6870

Or visit us online at: www.PrairieHills.com

MA MEDICAL ASSOCIATES

"Providing comprehensive care with a commitment to you"



PRESCRIPTION REFILL LINE MON-FRI 8 TO 5: 243-1644 • DAY OR NIGHT CALL: 243-2511

MAIN CAMPUS MEDICAL ASSOCIATES *MULTISPECIALTY GROUP PRACTICE*
915 13TH AVE. N., CLINTON, IA 52732 • (563) 243-2511



FULTON FAMILY HEALTH CLINIC
• *FAMILY PRACTICE*
1705 16TH AVE., FULTON, IL 61252
(815) 589-2121



DEWITT FAMILY HEALTH CARE
• *FAMILY PRACTICE* • *OB/GYN*
1021 11TH ST., DEWITT, IA 52742
(563) 659-9294



MORRISON FAMILY HEALTH CARE
• *FAMILY PRACTICE* • *OPHTHALMOLOGY*
635 E. LINCOLNWAY, MORRISON, IL
61270 • (815) 772-7491



GSC

GATEWAY SURGERY CENTER
841 Springdale Dr., Clinton

(563) 244-9955

ma CANCER CENTER
Medical Associates - Clinton, Iowa



915 13th Ave. North, Clinton
(563) 243-2511
www.maclinton.com

ma HEART CENTER
915 13th Ave. N., Clinton



(563) 243-2511

Cardiology Diagnostic Testing

Echocardiography

- Stress Echo & Testing
- Carotid Ultrasound

Nuclear Imaging Vascular Testing

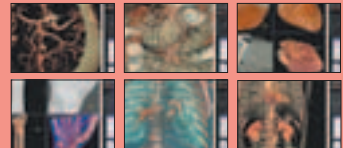
- Electrocardiogram (EKG)
- Holter Monitoring
- Impedance Cardiography (ICG)
- Pacemaker Monitoring
- Tilt-Table Testing

TRANSFORMING THE HEALTHCARE LANDSCAPE



Superior Images • Skilled Physicians • A Winning Combination

Assess your risk...Catch plaque problems sooner.



- Unparalleled Images
- Lower Radiation Dosage

Get your calcium scoring done now,
call us at 563-243-2511

ma IMAGING CENTER

Medical Associates - Clinton, Iowa

(563) 243-2511 • 915 13th Avenue North, Clinton • www.maclinton.com

Medical Associates...

Comprehensive Services for all your healthcare needs.

- ALLERGY
- CARDIOLOGY
- FAMILY PRACTICE
- GASTROENTEROLOGY AND HEPATOLOGY
- GENERAL SURGERY
- HEMATOLOGY/ONCOLOGY
- INTERNAL MEDICINE
- NEPHROLOGY
- NEUROLOGY
- OBSTETRICS AND GYNECOLOGY
- OPTHALMOLOGY
- ORTHOPAEDIC SURGERY
- OTOLARYNGOLOGY AND HEAD AND NECK SURGERY
- PATHOLOGY
- PEDIATRICS
- PODIATRY
- PULMONARY MEDICINE
- RHEUMATOLOGY
- UROLOGY
- VASCULAR AND THORACIC SURGERY



ma IMAGING CENTER
...steps ahead in Woman's Care!

Digital Mammography is here for the Best Possible Care!

Digital Precision: The power to see more — the safer way! Early detection is everything

OTHER ANCILLARY SERVICES

- Audiology
- Bone Densitometry
- Diabetic Education
- Laboratory
- MRI
- Nutrition Counseling
- Optical Shop
- Ultrasound
- X-Ray
- Nuclear Imaging
- Vascular Testing